

SIOUX CITY, IOWA

AL-395 (FAA)

20366

WAAS CH 57911 W13A	APP CRS 133°	Rwy Idg 9002 TDZE 1095 Apt Elev 1098
--	------------------------	---

RNAV (GPS) RWY 13

SIoux GATeway/BRIGADIER GENERAL BUD DAY FIELD (SUX)

RNP APCH.

T Inop table does not apply to LPV all Cats. For uncompensated Baro-VNAV systems, LNAV/VNAV NA below -20°C or above 54°C. For inop ALS, increase LNAV/VNAV Cat E visibility to 1 $\frac{5}{8}$ SM and LNAV Cat E visibility to 1 $\frac{1}{2}$ SM.

MALS



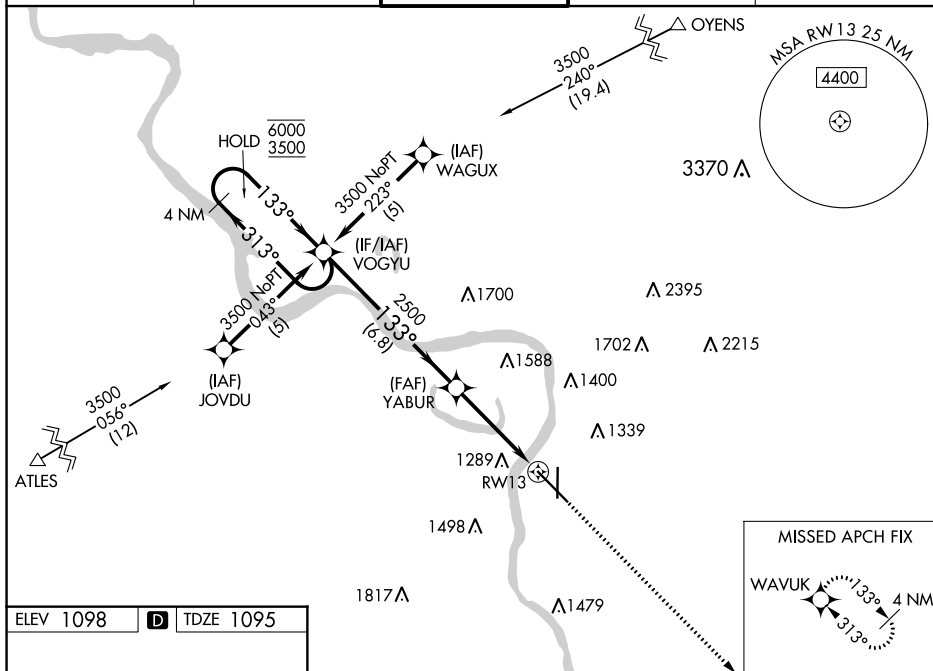

MISSED APPROACH: Climb to 3900 direct WAVUK and hold.

ATIS
119.45 270.8

SIOUX CITY APP CON ★
 124.6 307.0

SIOUX CITY TOWER ★
 118.7 (CTAF) 254.3

GND CON
121.9 348.6

UNICOM
122.95

ELEV 1098	D	TDZE 1095
-----------	----------	-----------

REIL Rwy 18 **L**
HIRL Rwy 13-31 **L**
MIRL Rwy 18-36 **L**

SILOUX CITY, IOWA
Orig-F 21MAY20

VGSI and RNAV glidepath not coincident
(VGSI Angle 3.00/TCH 50).

4 NM
Holding Pattern

$\frac{6000}{3500}$ \rightarrow
 $\frac{GP\ 3.00^\circ}{TCH\ 54}$

VOGYU

YABUUR


Incident	3900	WAVUK
----------	------	-------

3900	WAVUK
------	-------

* LNAV only.

*1.5 NM to

RW13

CATEGORY	A	B	C	D	E
LPV DA	1295/40 200 (200-¾)				
LNAV/ VNAV	1582-1⅓ 487 (500-1⅓)				
LNAV MDA	1620/40 525 (600-¾)		1620-1¼ 525 (600-1¼)		
 CIRCLING	1640-1 542 (600-1)	1700-1 602 (700-1)	1700-1¾ 602 (700-1¾)	1840-2½ 742 (800-2½)	2000-3 902 (1000-3)

42°24'N-96°23'W **PNIAV (GPS) RWY 12**

RNAV (GPS) RWY 13

NC-3, 31 DEC 2020 to 28 JAN 2021

NC-3, 31 DEC 2020 to 28 JAN 2021