

LOC I-MXJ <b>108.5</b>	APCH CRS <b>190°</b>	Rwy Idg <b>12,400</b> TDZE <b>871</b> Arpt Elev <b>871</b>
---------------------------	-------------------------	--

JAL-496 [USAF]

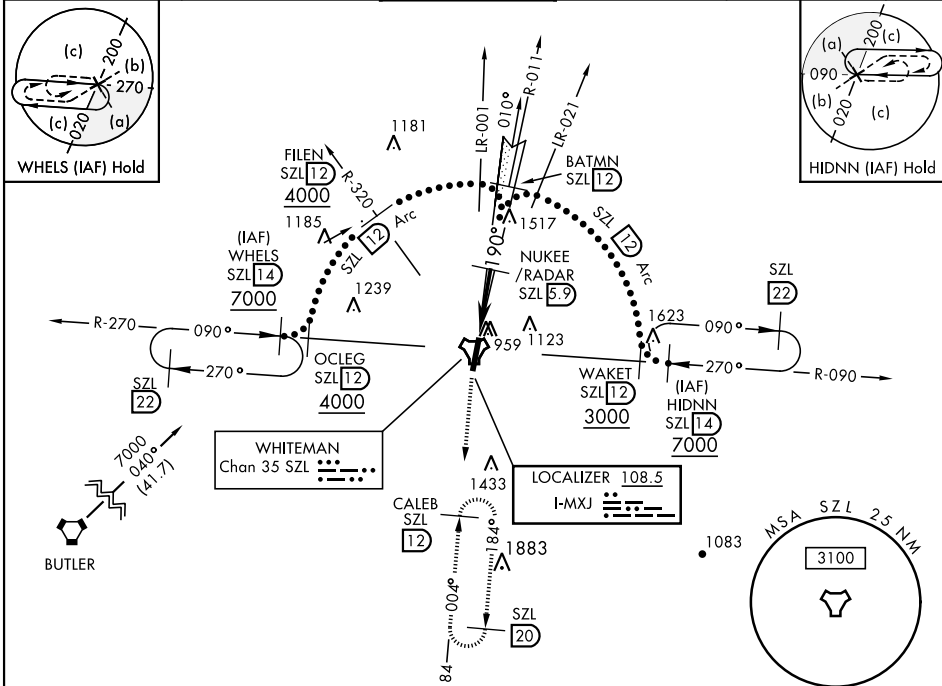
WHITEMAN AFB (KSZL)

- ▼ \* When ALS inop, increase CAT CDE RVR to 40 and vis to ¾ mile.  
 \*\* When ALS inop, increase CAT CDE RVR to 55 and vis to 1 mile.  
 \*\*\* Circling not authorized W of Rwy 1-19.



MISSED APPROACH: Climb to 3000 via SZL TACAN R-184 to CALEB and hold.

ATIS <b>118.725 239.025</b>	WHITEMAN APP CON <b>127.45 284.0</b>	WHITEMAN TOWER★ <b>132.4 318.8</b>	GND CON <b>128.275 275.8</b>	CLNC DEL <b>121.75 335.8</b>	ASR
--------------------------------	---	---------------------------------------	---------------------------------	---------------------------------	-----



## RADAR or DME REQUIRED

EMERG SAFE ALT 100 NM 4700

