
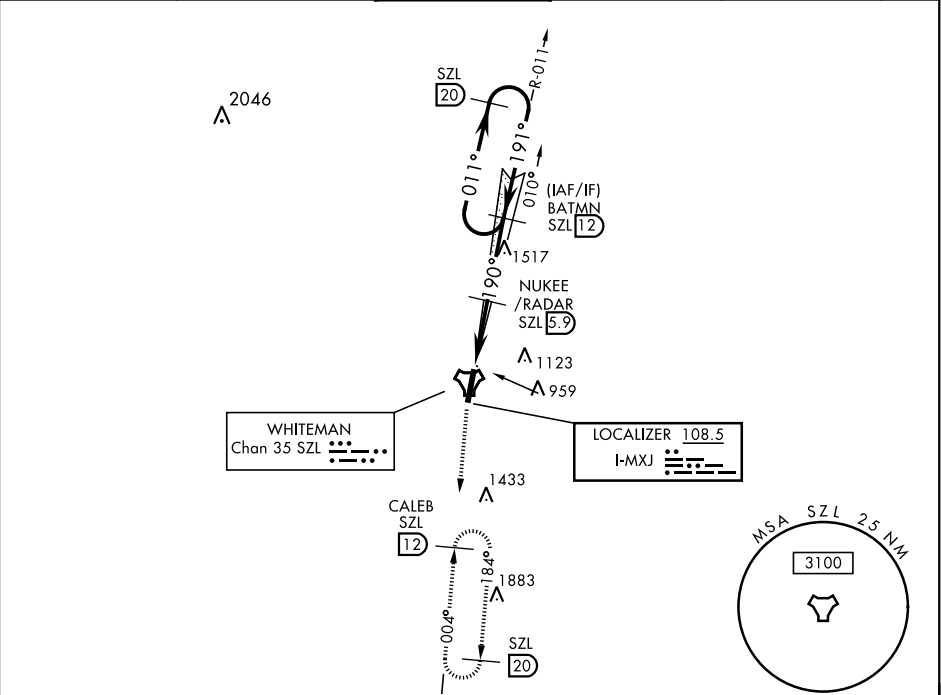


KNOB NOSTER, MISSOURI

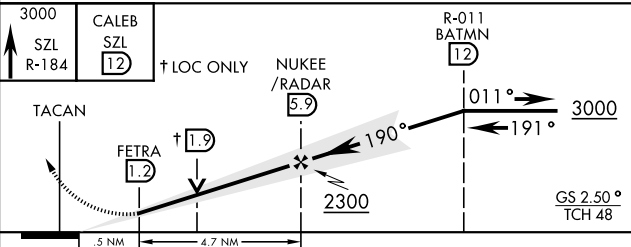
ILS or LOC Y RWY 19

LOC I-MXJ 108.5	APCH CRS 190°	Rwy Idg 12,400 TDZE 871 Arpt Elev 871	AL-496 [USAF]	WHITEMAN AFB (KSZL)		
*When ALS inop, increase CAT ABCDE RVR to 40 and vis to ¾ mile. **When ALS inop, increase CAT ABCDE RVR to 55 and vis to 1 mile. ***Circling not authorized W of Rwy 1-19.			ALSF-1 	MISSED APPROACH: Climb to 3000 via SZL TACAN R-184 to CALEB and hold.		
ATIS 118.725 239.025		WHITEMAN APP CON 127.45 284.0	WHITEMAN TOWER ★ 132.4 318.8	GND CON 128.275 275.8	CLNC DEL 121.75 335.8	ASR

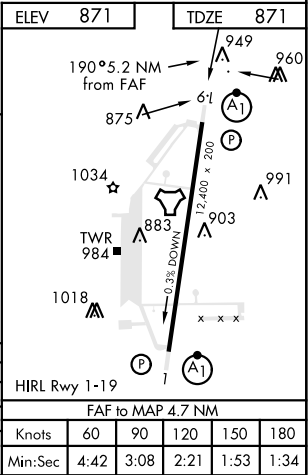


RADAR or DME REQUIRED

EMERG SAFE ALT 100 NM 4700



CATEGORY	A	B	C	D	E
S-ILS 19 *	1071/24	200	(200-½)		
S-LOC 19 **	1220/24	349 (400-½)	1220/30	349	(400-¾)
CIRCLING ***	1300-1 429 (500-1)	1340-1 469 (500-1)	1340-1½ 469 (500-1½)	1460-2	589 (600-2)



KNOB NOSTER, MISSOURI

38°43'N-93°33'W

WHITEMAN AFB (KSZL)

Amtd 1 10OCT19

ILS or LOC Y RWY 19

NC-3, 31 DEC 2020 to 28 JAN 2021

NC-3, 31 DEC 2020 to 28 JAN 2021