

APCH CRS	Rwy Idg	12,400
010°	TDZE	837
	Arpt Elev	871

AL-496 (USAF)

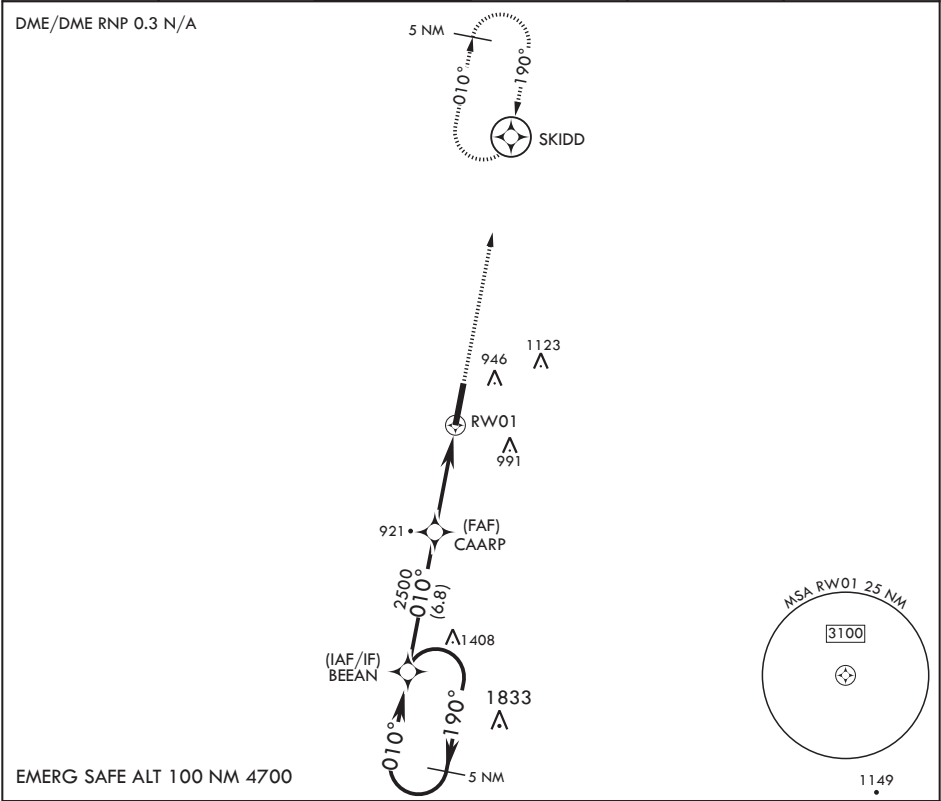
WHITEMAN AFB (KSZL)

* When ALS inop, increase CAT AB RVR to 55 and vis to 1 mile, CAT CDE vis to 1 3/8 miles.
 ** Circling not authorized W of Rwy 1-19.

ALSF-1

MISSED APPROACH: Climb to 3000 direct SKIDD and hold.

ATIS	APP CON	TOWER*	GND CON	CLNC DEL	ASR
118.725 239.025	127.45 284.0	132.4 318.8	128.275 275.8	121.75 335.8	



3000

190°

010°

BEEAN

010°

CAARP

2500

1.3 NM to RW01

RW01

3000

SKIDD

ELEV 871

TDZE 837

2.92° ≥

TCH 51

5.2 NM

CATEGORY	A	B	C	D	E
LNAV MDA*	1280/24 443 (500-1/2)		1280/45 443 (500-3/4)		
CIRCLING**	1300-1 429 (500-1)	1340-1 469 (500-1)	1340-1 1/2 469 (500-1 1/2)	1460-2 589 (600-2)	