

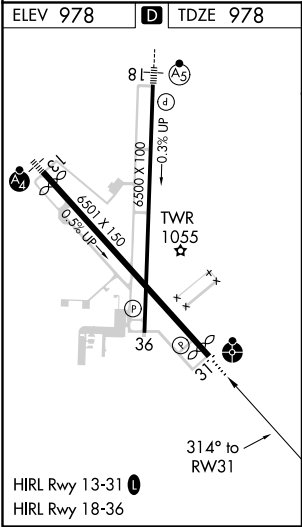
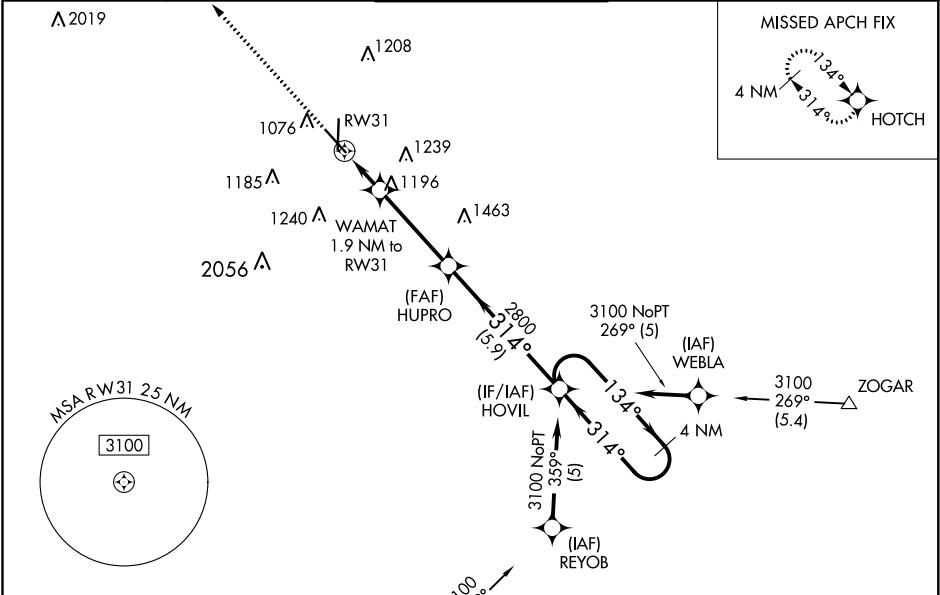
WAAS CH <b>69334</b> <b>W31A</b>	APP CRS <b>314°</b>	Rwy Idg TDZE Apt Elev	<b>5813</b> <b>978</b> <b>978</b>
--	------------------------	-----------------------------	---

# RNAV (GPS) RWY 31

JOPLIN RGNL (JLN)

RNP APCH.	ODALS	MISSED APPROACH: Climb to 3100 direct HOTCH and hold.
For uncompensated Baro-VNAV systems, LNAV/VNAV NA below -16°C (4°F) or above 54°C (130°F). Inoperative table does not apply. Rwy 31 helicopter visibility reduction below ¾ SM NA.		

ATIS <b>120.85</b>	KANSAS CITY CENTER <b>128.6 282.325</b>	JOPLIN TOWER★ <b>119.8 (CTAF) 0</b>	GND CON <b>121.6</b>	UNICOM <b>122.95</b>
-----------------------	--	--	-------------------------	-------------------------



ELEV 978	D	TDZE 978
NEOSHO EOS 3100 0.42 (6.6)		
Procedure NA for arrivals on EOS VOR/DME airway radials 351 CW 111.		
3100	HOTCH	HOVIL 4 NM Holding Pattern
* LNAV only.		
WAMAT 1.9 NM to RW31		
RW31		
HUPRO 2800		
HOVIL 314°		
3100 134°		
GP 3.00° TCH 47		
1.9 NM 3.7 NM 5.9 NM		
CATEGORY	A	B
LPV DA	1229-¾	251 (300-¾)
LNAV/VNAV DA	1357-1¼	379 (400-1¼)
LNAV MDA	1500-1 522 (600-1)	1500-1½ 522 (600-1½)
CIRCLING	1500-1 522 (600-1)	1540-1½ 562 (600-1½) 1600-2 622 (700-2)