

ILS or LOC RWY 2

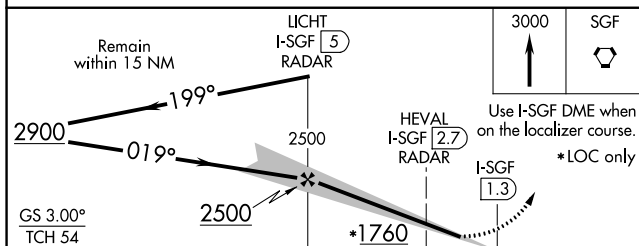
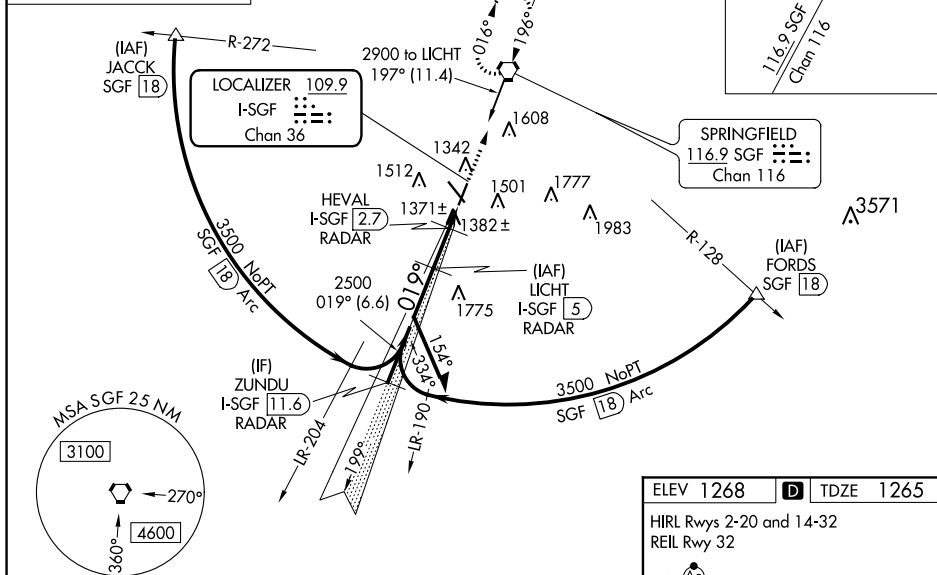
SPRINGFIELD-BRANSON NATIONAL (SGF)

MALSR

MISSED APPROACH: Climb to 3000 direct SGF VORTAC and hold (TACAN aircraft continue on SGF VORTAC R-024 to PLADD/SGF 18.4 DME and hold northeast, right turn, 204° inbound).

Diagram illustrating alternate missed approach fixes for DME or RADAR REQUIRED:

- DOGWOOD (DGD):** 106° turn, 286° turn, 109.4 distance, Chan 31.
- TACAN MISSED APCH FIX:** 204° turn, 18.4 distance, PLADD SGF.



			2.3 NM		1.4 NM			
CATEGORY	A	B		C	D		E	
S-ILS 2	# 1465/24 200 (200-½)							
S-LOC 2	1700/24	435 (500-½)		1700/40		435 (500-¾)		
CIRCLING	1760-1	1820-1		1820-1½		1920-2		2080-3
	492 (500-1)	552 (600-1)		552 (600-1½)		652 (700-2)		812 (900-3)

