

WAAS CH 40121 W14A	APP CRS 139°	Rwy Idg 8000 TDZE 1260 Apt Elev 1268
--	------------------------	---

RNAV (GPS) RWY 14

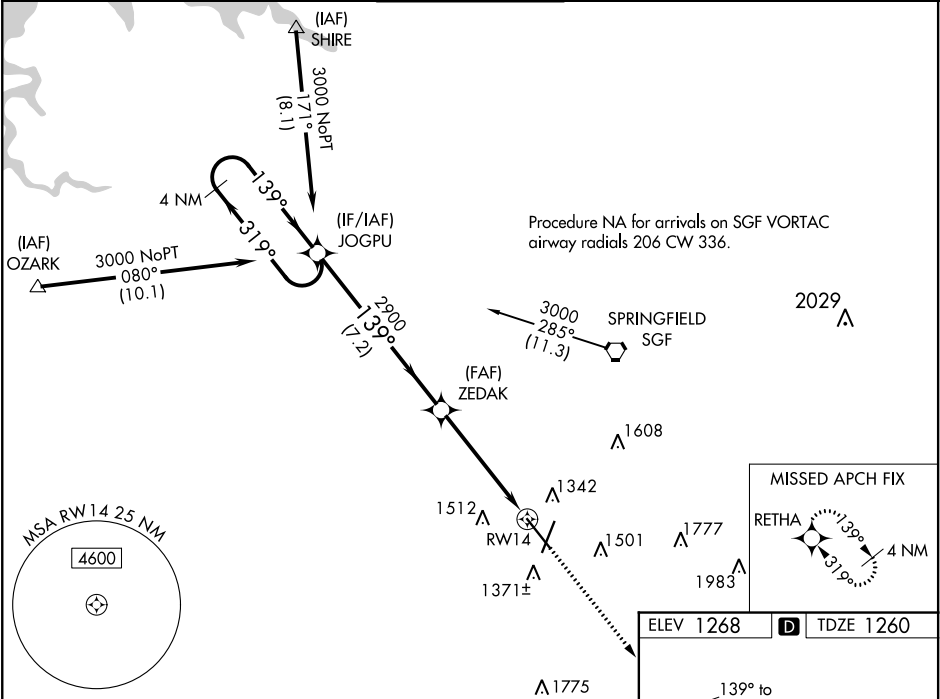
SPRINGFIELD-BRANSON NATIONAL (SGF)

▼ Inoperative table does not apply to LPV all Cats. For uncompensated Baro-VNAV systems, LNAV/VNAV NA below -21°C (-5°F) or above 54°C (130°F). DME/DME RNP-0.3 NA. Helicopter visibility reduction below ¾ SM NA. For inoperative MALSR, increase LNAV/VNAV all Cats visibility to 1½, increase LNAV Cat A/B visibility to 1.

MALSR

MISSED APPROACH: Climb to 3000 direct RETHA and hold.

ATIS 135.125	SPRINGFIELD APP CON 121.1 290.5	SPRINGFIELD TOWER 119.9 257.8	GND CON 121.9 251.15	CLNC DEL 123.675
------------------------	---	---	--------------------------------	----------------------------



4 NM Holding Pattern		VGSi and RNAV glidepath not coincident (VGSi Angle 3.00/TCH 56).		3000 RETHA	
GP 3.00° TCH 50		ZEDAK 2900		*1.3 NM to RWY 14	
7.2 NM		3.7 NM		1.3 NM	
CATEGORY	A	B	C	D	
LPV DA	1518-¾		258 (300-¾)		
LNAV/VNAV DA	1620-¾		360 (400-¾)		
LNAV MDA	1720-¾ 460 (500-¾)		1720-7/8 460 (500-7/8)		
CIRCLING	1760-1 492 (500-1)	1820-1 552 (600-1)	1820-1½ 552 (600-1½)	1920-2 652 (700-2)	REIL Rwy 32 HIRL Rws 2-20 and 14-32