

VORTAC SGF 116.9 Chan 116	APP CRS 196°	Rwy Idg 7003 TDZE 1262 Apt Elev 1268
---	------------------------	---

VOR or TACAN RWY 20
SPRINGFIELD-BRANSON NATIONAL (SGF)

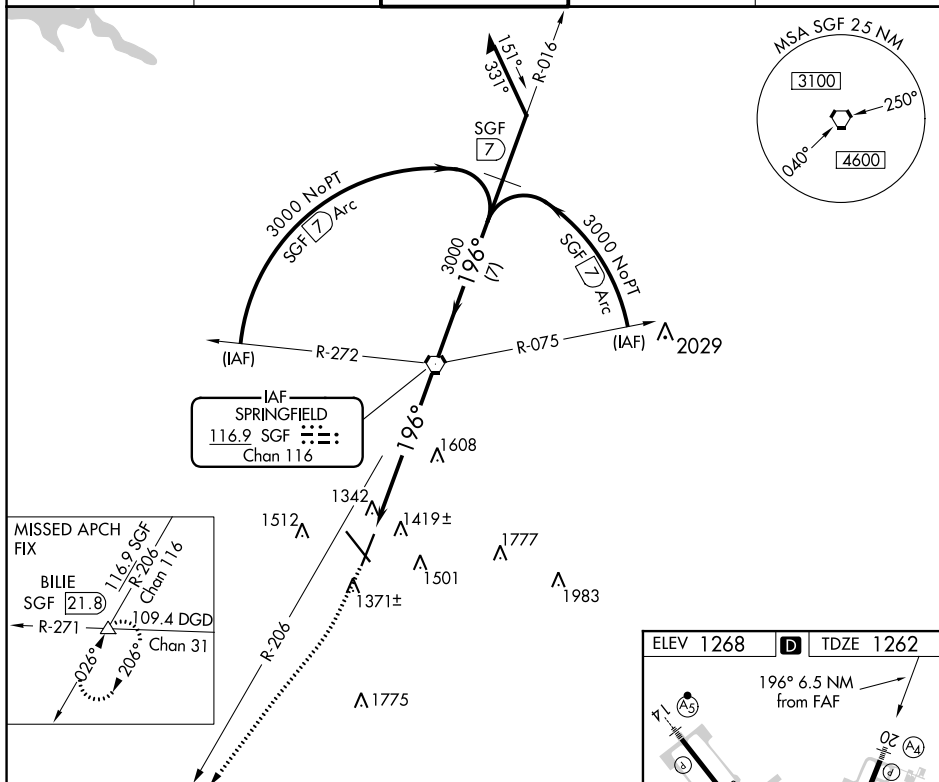
T Inoperative table does not apply to Cat C. Helicopter visibility reduction below $\frac{3}{4}$ SM not authorized. When local altimeter setting not received, use Monett altimeter setting and increase all MDA 100 feet, increase S-20 Cat C/D/E visibility $\frac{1}{4}$ mile, increase Circling Cat C/E visibility $\frac{1}{4}$ mile. VDP NA when using Monett altimeter setting.

MALS

A_1 A_2

MISSED APPROACH: Climb to 3000 then right turn to intercept SGF R-206 to BLUE INT/SGF 21.8 DME and hold.

ATIS 135.125	SPRINGFIELD APP CON 121.1 290.5	SPRINGFIELD TOWER 119.9 257.8	GND CON 121.9 251.15	CLNC DEL 123.675
-----------------	------------------------------------	----------------------------------	-------------------------	---------------------



NC-3, 31 DEC 2020 to 28 JAN 2021

NC-3, 31 DEC 2020 to 28 JAN 2021