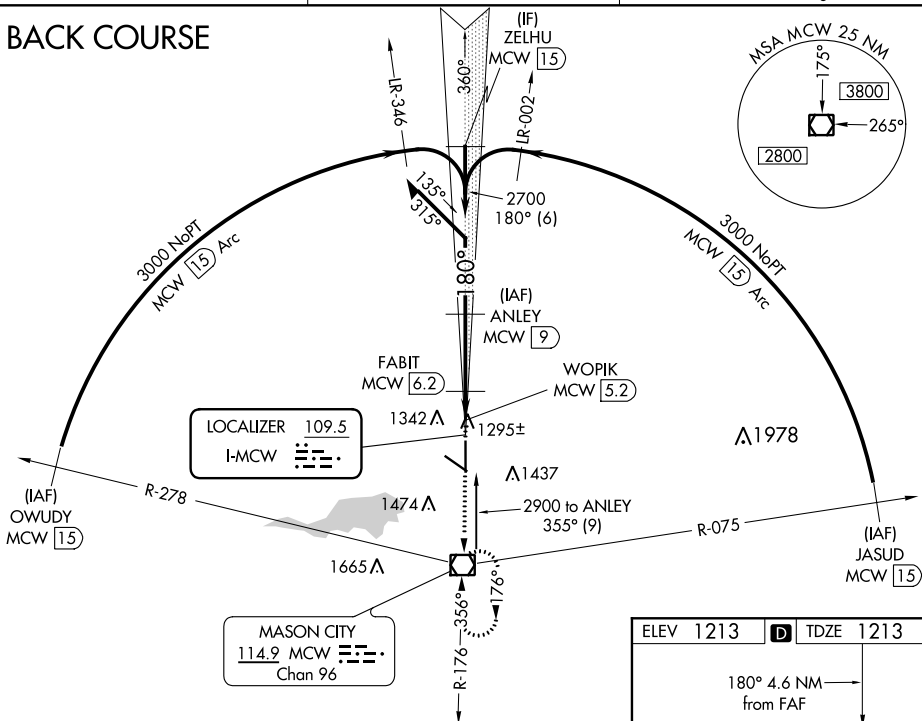
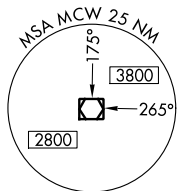


LOC BC RWY 18
MASON CITY MUNI (MCW)

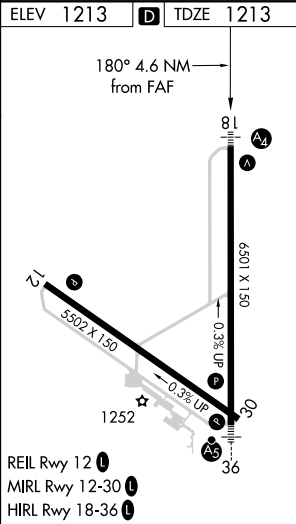
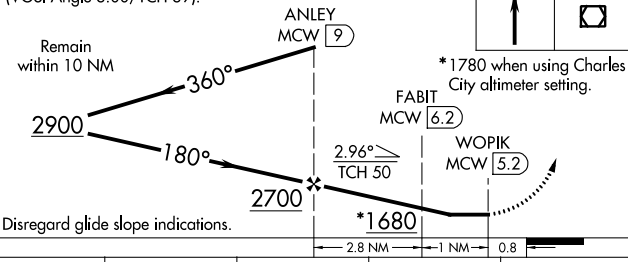
MISSED APPROACH:
Climb to 3000 direct
MCW VOR/DME and
hold

UNICOM
123.0 (CTAF) **L**

(IF)
ZELHU
MCW 15



3000	MCW
------	-----



CATEGORY	A	B	C	D
S-18	1560- ³ / ₄ 347 (400- ³ / ₄)			
CIRCLING	1660-1 447 (500-1)	1680-1 467 (500-1)	1760-1½ 547 (600-1½)	1780-2 567 (600-2)

NC-3, 31 DEC 2020 to 28 JAN 2021

NC-3, 31 DEC 2020 to 28 JAN 2021