

WAAS CH <b>40100</b> <b>W18A</b>	APP CRS <b>180°</b>	Rwy Idg TDZE <b>1213</b> Apt Elev <b>1213</b>
--	------------------------	---

RNAV (GPS) RWY 18

MASON CITY MUNI (MCW)

RNP APCH.

▼

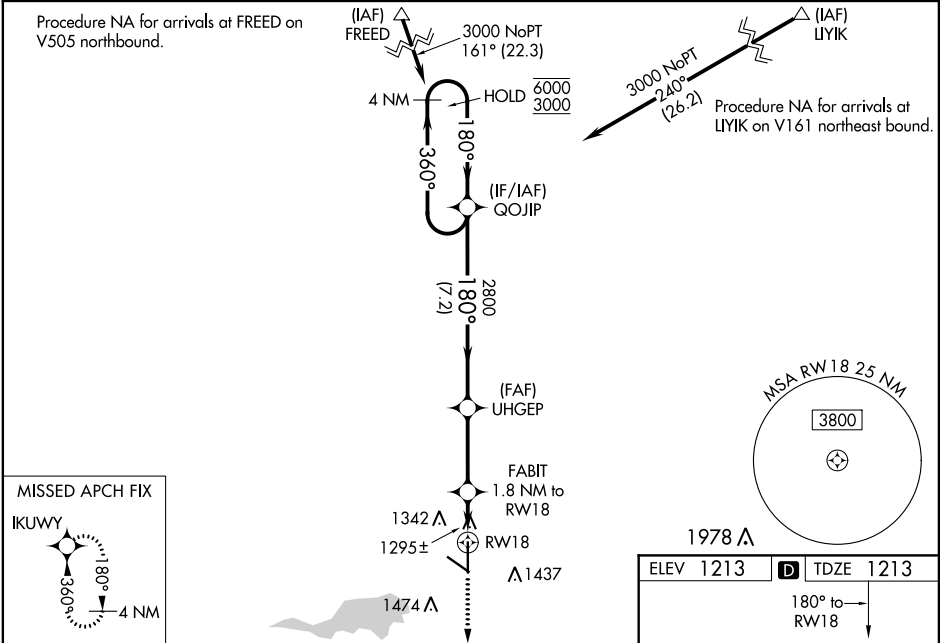
⚠

Baro-VNAV and VDP NA when using Charles City altimeter setting. For uncompensated Baro-VNAV systems, LNAV/VNAV NA below -17°C or above 54°C. Inop table does not apply to LPV and LNAV/VNAV. When local altimeter setting not received, use Charles City altimeter setting and increase all DA 87 feet; increase all MDA 100 feet and LNAV Cats C/D and Circling Cat C visibility ¼ SM. For inop MALS when using Charles City altimeter setting, increase LPV and LNAV/VNAV all Cats visibility ½ SM; LNAV Cats C/D visibility to 1½ SM.

MALS

MISSED APPROACH:  
Climb to 3000 direct IKUWY and hold.

ASOS <b>120.3</b>	MINNEAPOLIS CENTER <b>127.3 257.675</b>	UNICOM <b>123.0 (CTAF) 0</b>
----------------------	--	---------------------------------



4 NM Holding Pattern

GP 3.00° TCH 55

VGSI and RNAV glidepath not coincident (VGSI Angle 3.00/TCH 39).

3000 IKUWY

\*LNAV only

6000	360°	3000	180°	180°	2800	180°	2800	1.8 NM to RW18	*1 NM to RW18	RW18
*1840										
7.2 NM 3 NM 0.8 1 NM										

CATEGORY	A	B	C	D
LPV DA		1413-¾	200 (200-¾)	
LNAV/VNAV DA		1463-¾	250 (300-¾)	
LNAV MDA		1560-¾	347 (400-¾)	
CIRCLING	1660-1 447 (500-1)	1680-1 467 (500-1)	1760-1½ 547 (600-1½)	1780-2 567 (600-2)

