

WAAS CH 93522 W36A	APP CRS 360°	Rwy Idg TDZE 1193 Apt Elev 1213
--	------------------------	---

RNAV (GPS) RWY 36

MASON CITY MUNI (MCW)

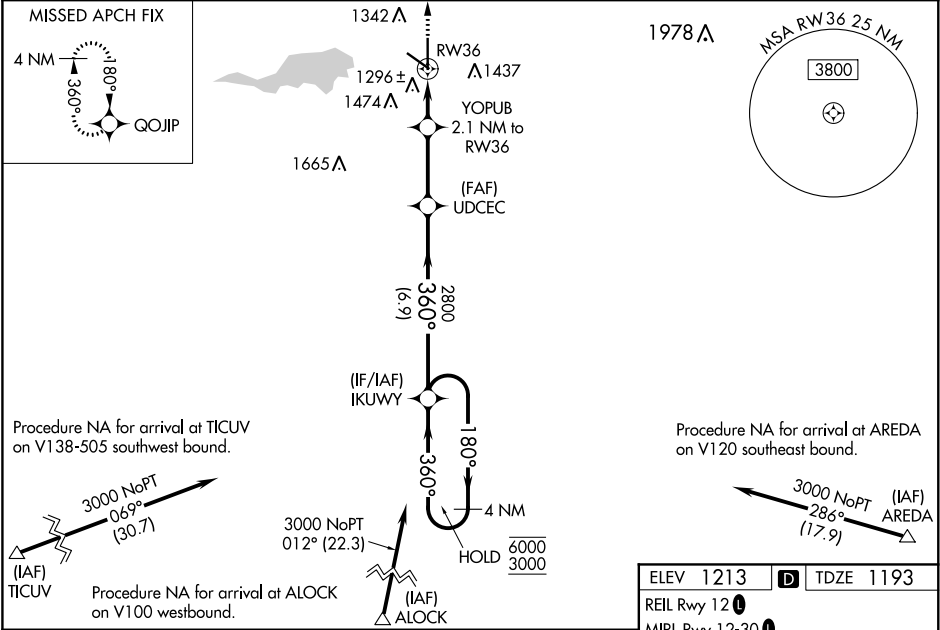
RNP APCH.

For uncompensated Baro-VNAV systems, LNAV/VNAV NA below -17°C or above 54°C.
When local altimeter setting not received, use Charles City altimeter setting: increase LPV DA to 1480 feet, LNAV/VNAV DA to 1562 and LNAV/VNAV visibility ¼ SM; increase all MDA 100 feet and LNAV Cats C and D visibility ⅓ SM and Circling Cat C ¼ SM. For inop MALSR when using Charles City altimeter setting, increase LPV visibility to 1 SM and LNAV Cats C/D to 1 ⅓ SM. Baro-VNAV and VDP NA when using Charles City altimeter setting. For inop MALSR, increase LNAV/VNAV visibility to ⅔ SM and LNAV Cats C and D to 1 SM.

MALSR

MISSED APPROACH:
Climb to 3000 direct QOJIP and hold.

ASOS 120.3	MINNEAPOLIS CENTER 127.3 257.675	UNICOM 123.0 (CTAF)
----------------------	--	-------------------------------



3000	QOJIP	VGS1 and RNAV glidepath not coincident (VGS1 Angle 2.90/TCH 62).			
*LNAV only.		YOPUB	UDCEC	IKUWY	4 NM Holding Pattern
		2.1 NM to RW36	2800	180° → 6000	← 360° 3000
		*1 NM to RW36		360°	
			1900*	2800	GP 3.00° TCH 40
		1 NM	1.1 NM	2.8 NM	6.9 NM
CATEGORY		A	B	C	D
LPV DA			1393-½	200 (200-½)	
LNAV/VNAV DA			1475-½	282 (300-½)	
LNAV MDA		1560-½	367 (400-½)	1560-⅝	367 (400-⅝)
CIRCLING		1660-1 447 (500-1)	1680-1 467 (500-1)	1760-1½ 547 (600-½)	1780-2 567 (600-2)

