

| | | |
|---|------------------------|---|
| VOR/DME MCW 114.9 Chan 96 | APP CRS 356° | Rwy Idg 6401 TDZE 1193 Apt Elev 1214 |
|---|------------------------|---|

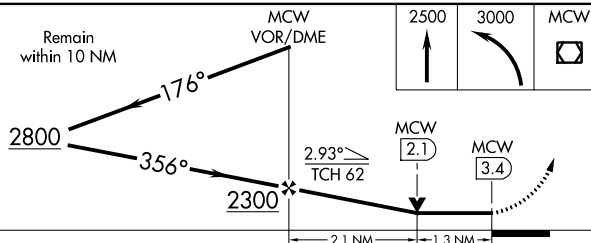
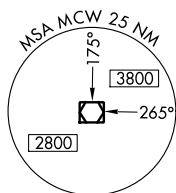
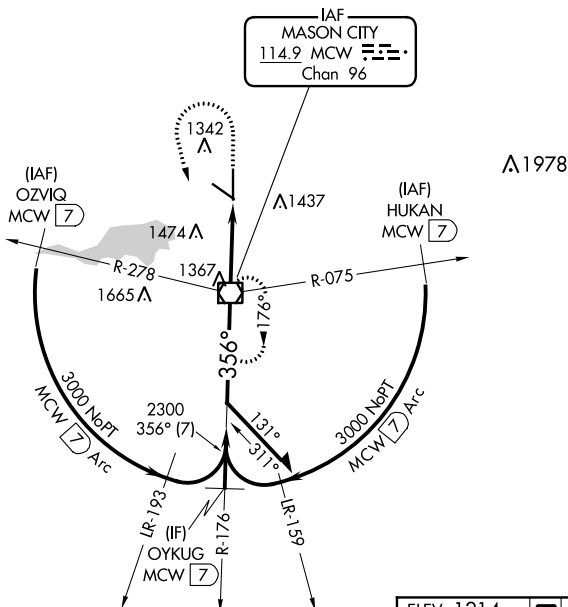
VOR RWY 36
MASON CITY MUNI (MCW)

A VDP NA with Charles City altimeter setting. When local altimeter setting not received, use Charles City altimeter setting and increase all MDA 100 feet and increase S-36 Cat C/D and Circling Cat C visibility $\frac{1}{4}$ mile.



MISSED APPROACH: Climb to 2500 then climbing left turn to 3000 direct MCW VOR/DME and hold.

| | | |
|----------------------|--|---------------------------------|
| ASOS 120.3 | MINNEAPOLIS CENTER 127.3 257,675 | UNICOM 123.0 (CTAF) 0 |
|----------------------|--|---------------------------------|



| CATEGORY | A | B | C | D |
|----------|-----------------------|---------------------------|--|---------------------------|
| S-36 | 1640- $\frac{3}{4}$ | 447 (500- $\frac{3}{4}$) | 1640- $\frac{7}{8}$ | 447 (500- $\frac{7}{8}$) |
| CIRCLING | 1660-1 446 (500-1) | 1680-1 466 (500-1) | 1760-1 $\frac{1}{2}$ 546 (600-1 $\frac{1}{2}$) | 1780-2 566 (600-2) |

