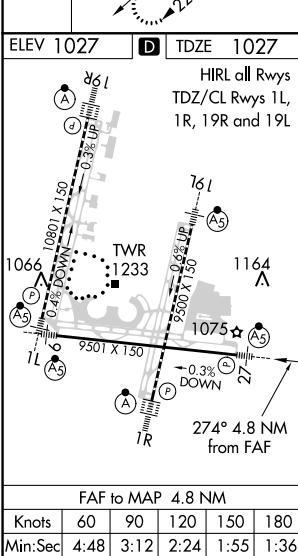
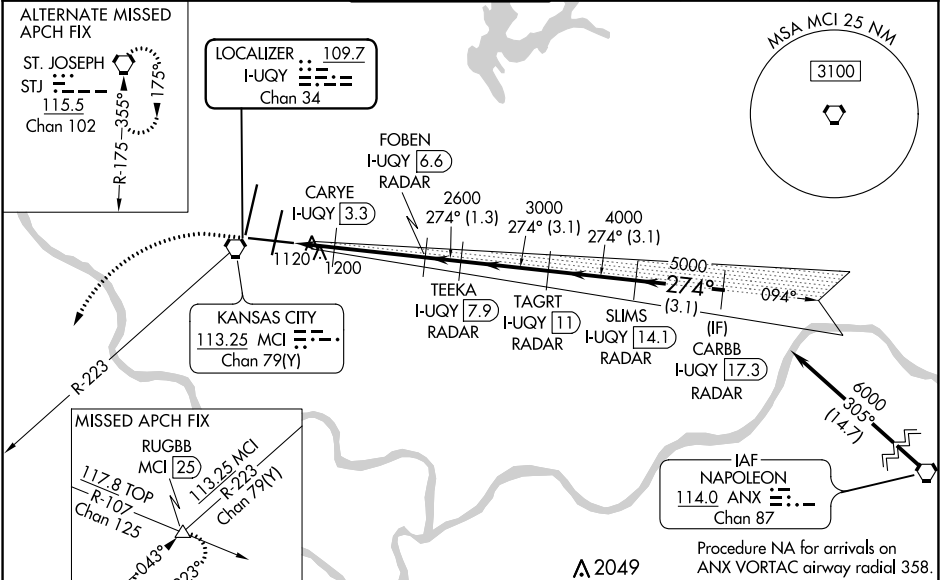


LOC/DME I-UQY 109.7 Chan 34	APP CRS 274°	Rwy Idg TDZE Apt Elev	9501 1027 1027
---	------------------------	-----------------------------	---

ILS or LOC RWY 27
KANSAS CITY INTL (MCI)

DME or RADAR required.	MALSR	MISSED APPROACH: Climb to 1600 then climbing left turn to 4000 on heading 230° and MCI VORTAC R-223 to RUGBB INT/MCI 25 DME and hold.
For inop ALS, increase S-ILS 27 Cat E visibility to RVR 4000, S-LOC 27 Cat C/D/E visibility to 1 3/4 SM and CARYE fix minimums S-LOC 27 Cat C/D/E visibility to RVR 5500. # RVR 1800 authorized with use of FD or AP or HUD to DA.		

D-ATIS 128.375	KANSAS CITY APP CON 120.95 318.1	INTERNATIONAL TOWER 128.2 254.25	GND CON 121.8	CLNC DEL 135.7	CPDLC
--------------------------	--	--	-------------------------	--------------------------	-------



ELEV 1027	TDZE 1027	1600	4000	MCI R-223	RUGBB	VGSI and ILS glidepath not coincident (VGSI Angle 3.00/TCH 72).	CARBB I-UQY 17.3 RADAR
		↑	hdg 230°				
*LOC only	CARYE I-UQY 3.3	FOBEN I-UQY 6.6 RADAR	TEEKA I-UQY 7.9 RADAR	TAGRT I-UQY 11 RADAR	SLIMS I-UQY 14.1 RADAR		
	I-UQY 1.8	I-UQY 2.7	2600	3000	4000	5000	6000
	0.9	0.6	-3.3 NM	-1.3 NM	-3.1 NM	-3.1 NM	-3.1 NM
CATEGORY	A	B	C	D	E		
S-ILS 27#	1227/24 200 (200-1/2)						
S-LOC 27	1540/24	513 (600-1/2)	1540/55	513 (600-1)			
CIRCLING	1540-1	513 (600-1)	1540-1 1/2 513 (600-1 1/2)	1580-2	553 (600-2)		
CARYE FIX MINIMUMS							
S-LOC 27	1380/24	353 (400-1/2)	1380/30	353 (400-5/8)			
CIRCLING	1540-1	513 (600-1)	1540-1 1/2 513 (600-1 1/2)	1580-2	553 (600-2)		

NC-3, 31 DEC 2020 to 28 JAN 2021

NC-3, 31 DEC 2020 to 28 JAN 2021