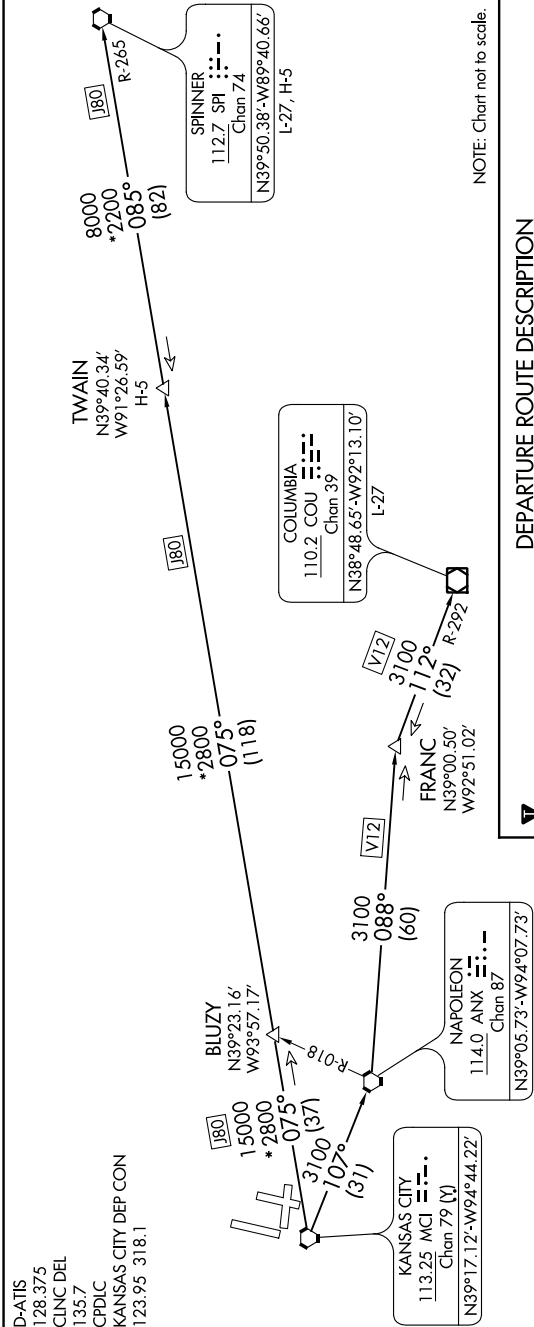


LAKE THREE DEPARTURE

AL-780 (FAA)

KANSAS CITY INTL (MCI)  
KANSAS CITY, MISSOURI

NC-3, 31 DEC 2020 to 28 JAN 2021



DEPARTURE ROUTE DESCRIPTION

**TAKEOFF ALL RUNWAYS:** Climb on assigned heading for RADAR vectors to appropriate route. Expect filed altitude 10 minutes after departure.

- COLUMBIA TRANSITION (LAKES3 COU):** From over MCI VORTAC on MCI R-107 to ANX VORTAC, then on ANX R-088 and COU R-292 to COU VOR/DME.
- FRANC TRANSITION (LAKES3.FRANC):** From over MCI VORTAC on MCI R-107 to ANX VORTAC, then on ANX R-088 to FRANC FIX.
- SPINNER TRANSITION (LAKES3.SPI):** From over MCI VORTAC on MCI R-075 and SPI R-265 to TWAIN FIX, then on SPI R-265 to SPI VORTAC.
- TWAIN TRANSITION (LAKES3.TWAIN):** From over MCI VORTAC on MCI R-075 and SPI R-265 to TWAIN FIX.



**NOTE:** RADAR required.  
**NOTE:** DME required.

**TAKEOFF MINIMUMS**  
Rwys 1L, 1R, 9, 19R, 19L, 27: Standard.

LAKE THREE DEPARTURE

NC-3, 31 DEC 2020 to 28 JAN 2021