

APP CRS	Rwy Idg	9501
274°	TDZE	1026
	Apt Elev	1026

RNAV (RNP) Z RWY 27

KANSAS CITY INTL (MCI)

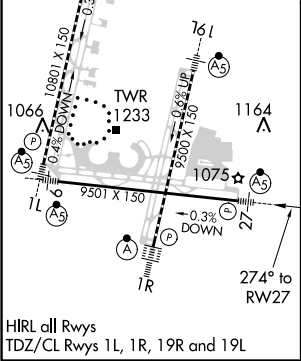
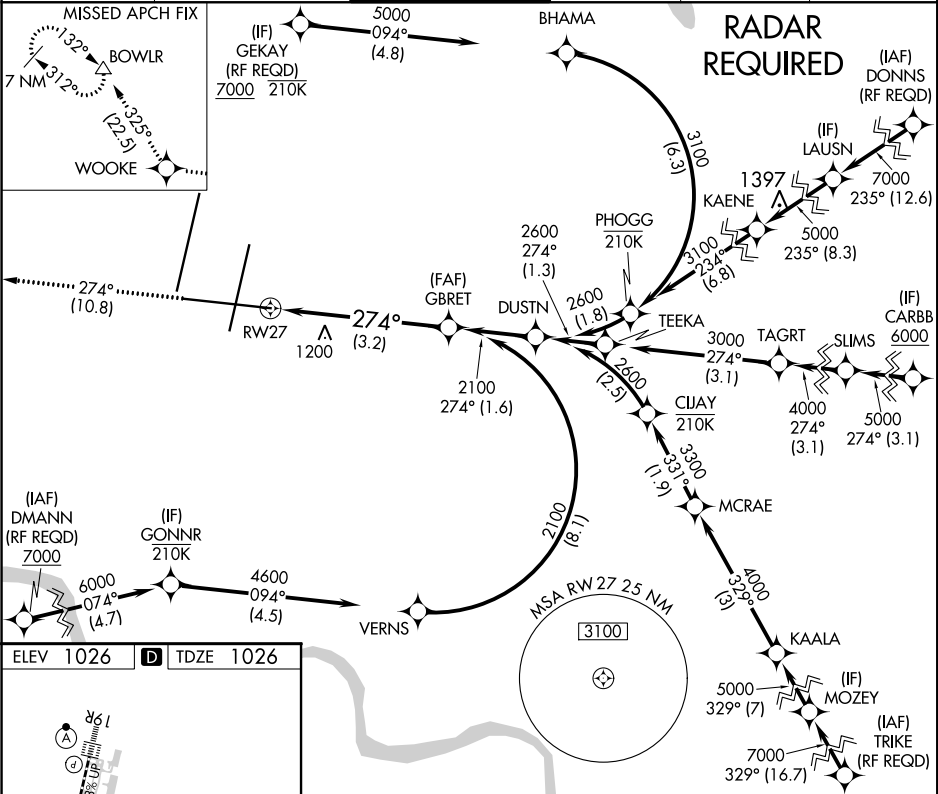
▼

For uncompensated Baro-VNAV systems, procedure NA below -20°C (-4°F) or above 54°C (130°F). For inop MALSR, increase RNP 0.15 all Cats visibility to 1½ and RNP 0.30 all Cats visibility to 1¾. GPS required.

MALSR

MISSED APPROACH: Climb to 4000 on track 274° to WOOKIE and on track 325° to BOWLR and hold.

D-ATIS 128.375	KANSAS CITY APP CON 120.95 318.1	INTERNATIONAL TOWER 128.2 254.25	GND CON 121.8	CLNC DEL 135.7	CPDLC
-------------------	-------------------------------------	-------------------------------------	------------------	-------------------	-------



4000	↑	tr 274°	WOOKIE ✦	tr 325°	BOWLR △	GBRET
						2100
VGSI and RNAV glidepath not coincident (VGSI Angle 3.00/TCH 72).						
See Planview for multiple IF locations.						2100
GP 3.00° TCH 49						
3.2 NM						
CATEGORY	A	B	C	D		
RNP 0.15 DA	1410/45 384 (400-7%)					
RNP 0.30 DA	1511/60 485 (500-1¼%)					
AUTHORIZATION REQUIRED						