

WAAS CH <b>56608</b> <b>W09A</b>	APP CRS <b>094°</b>	Rwy Idg TDZE <b>1015</b> Apt Elev <b>1026</b>
--	------------------------	---

RNAV (GPS) Y RWY 9

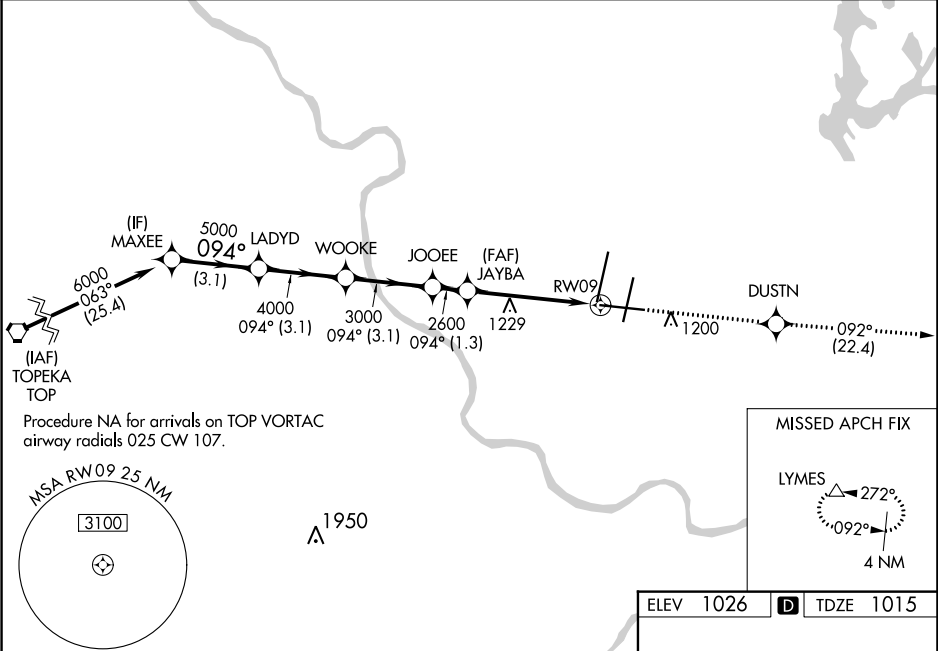
KANSAS CITY INTL (MCI)

Inop table does not apply to LPV and LNAV/VNAV.  
For uncompensated Baro-VNAV systems, LNAV/VNAV NA below -20°C (-4°F) or above 54°C (130°F). DME/DME RNP-0.3 NA.  
For inop MALSR, increase LNAV Cat A/B visibility to RVR 5000 and Cat C/D/E visibility to 1½ mile.

MALSR

MISSED APPROACH: Climb to 4000 direct DUSTN and on track 092° to LYMES and hold.

D-ATIS <b>128.375</b>	KANSAS CITY APP CON <b>120.95 318.1</b>	INTERNATIONAL TOWER <b>128.2 254.25</b>	GND CON <b>121.8</b>	CLNC DEL <b>135.7</b>	CPDLC
--------------------------	--	--	-------------------------	--------------------------	-------



	ELEV 1026		D		TDZE 1015	
	MAXEE	LADYD	4000	DUSTN	tr 092°	LYMES
	6000	5000	4000	3000	2600	
	GP 3.00° TCH 56		*LNAV only			
	—3.1 NM—		—3.1 NM—		—3.1 NM—	
CATEGORY	A		B		C	
LPV DA	1315/50		300 (300-1)			
LNAV/ VNAV	DA		1320/50		305 (300-1)	
LNAV MDA	1500/40		485 (500-¾)		1500/50 485 (500-1)	
CIRCLING	1540-1 514 (600-1)		1540-1½ 514 (600-1½)		1580-2 554 (600-2)	