

WAAS CH 86410 W30A	APP CRS 300°	Rwy Idg TDZE 549 Apt Elev 549	6000
--	------------------------	---	-------------

RNAV (GPS) RWY 30

JEFFERSON CITY MEMORIAL (JEF)

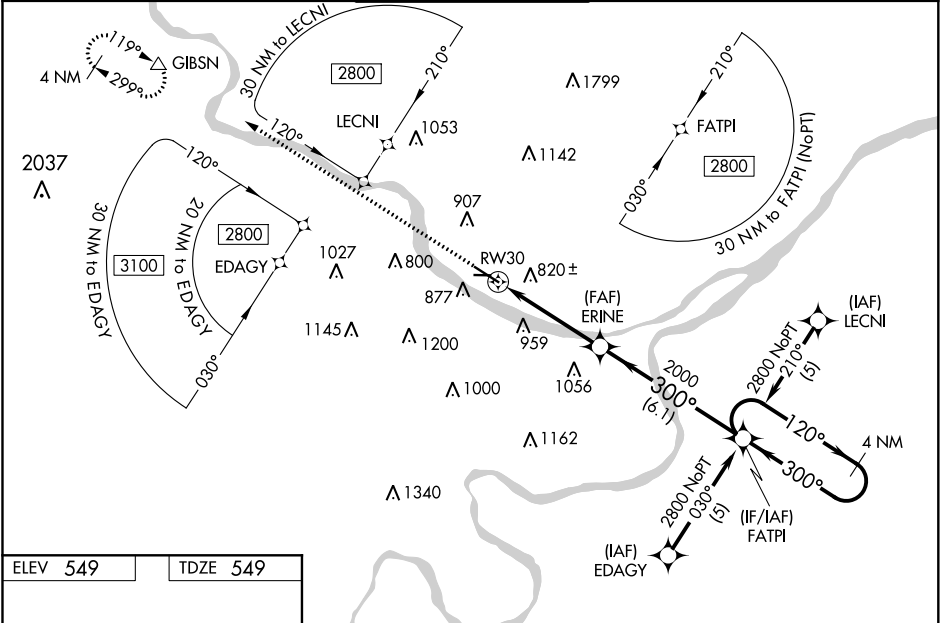
⚠ For uncompensated Baro-VNAV systems, LNAV/VNAV NA below -16°C (4°F) or above 47°C (116°F). DME/DME RNP-0.3 NA.

⚠ When local altimeter setting not received, use Columbia Rgnl altimeter setting and increase all DA/MDA 80 feet; increase LPV all Cats, LNAV/VNAV all Cats, LNAV Cats B, C, and D, and Circling Cats A, B and C visibility ¼ SM. For inoperative MALSR, when using Columbia Rgnl altimeter setting increase LPV all Cats visibility to 1¼. Baro-VNAV and VDP NA when using Columbia Rgnl altimeter setting. Circling Rwy 9 NA at night.

MALSR

MISSED APPROACH: Climb to 3000 direct GIBSN and hold.

ASOS 133.625	MIZZU APP CON 124.375 353.7	JEFFERSON CITY TOWER ★ 125.6 (CTAF) 0	GND CON 121.7	UNICOM 122.95
------------------------	---------------------------------------	--	-------------------------	-------------------------



ELEV **549** TDZE **549**

3000 GIBSN VGSi and RNAV glidepath not coincident (VGSi Angle 3.00/TCH 50).

* LNAV only. * 2 NM to RW30

ERINE FATPI 4 NM Holding Pattern

120° → 2800 GP 3.00° TCH 54

300° ← 2000

2 NM 2.3 NM 6.1 NM

CATEGORY	A	B	C	D
LPV DA	799-½ 250 (300-½)			
LNAV/VNAV DA	1322-2¼ 773 (800-2¼)			
LNAV MDA	1240-½ 691 (700-½)	1240-1½ 691 (700-1½)	1240-1¾ 691 (700-1¾)	1240-1¾ 691 (700-1¾)
CIRCLING	1320-1 771 (800-1)	1320-1¼ 771 (800-1¼)	1320-2¼ 771 (800-2¼)	1560-3 1011 (1100-3)

REIL Rwy 9, 12, and 27 **0**

MIRL Rwy 9-27 **0**

HIRL Rwy 12-30 **0**

NC-3, 31 DEC 2020 to 28 JAN 2021

NC-3, 31 DEC 2020 to 28 JAN 2021