

VORTAC MAW	APP CRS	Rwy Idg	5001
111.2	120°	TDZE	292
Chan 49		Apt Elev	294

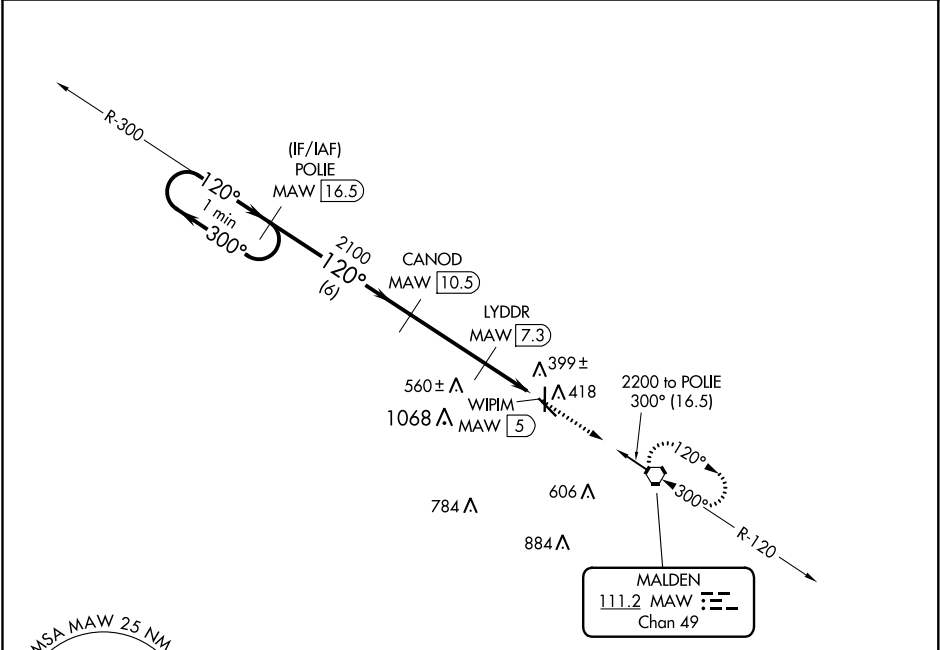
VOR/DME RWY 14
MALDEN RGNL (MAW)

NA

When local altimeter setting not received, use Poplar Bluff altimeter setting and increase all MDA 60 feet and S-14 Cat C visibility ¼ mile. VDP NA when using Poplar Bluff altimeter setting.

MISSED APPROACH: Climb to 2200 direct MAW VORTAC and hold, continue climb-in-hold to 2200.

AWOS-3PT	MEMPHIS CENTER	GCO	UNICOM
119.825	133.65 292.15	135.075	122.8 (CTAF) 0



One Minute Holding Pattern

2200 ← 300° → 120° → 2100

2200 MAW 16.5

CANOD MAW 10.5

LYDDR MAW 7.3

3.02° TCH 40

1000

MAW 6

WIPIIM MAW 5

6 NM 3.2 NM 1.3 1 NM

ELEV 294

TDZE 292

120° 5.5 NM from FAF

81

5010 x 100

5001 x 80

36

32

CATEGORY	A	B	C	D
S-14	660-1 368 (400-1)			NA
CIRCLING	720-1 426 (500-1)	820-1 526 (600-1)	820-1½ 526 (600-1½)	NA

REIL Rwy 14 and 32 0

MIRL Rwy 14-32 and 18-36 0