

DUBUQUE, IOWA

AL-923 (FAA)

20310

WAAS CH <b>69400</b> <b>W31A</b>	APP CRS <b>312°</b>	Rwy Idg <b>6502</b> TDZE <b>1062</b> Apt Elev <b>1077</b>
--	------------------------	---

RNAV (GPS) RWY 31  
DUBUQUE RGNL (DBQ)

RNP APCH.

**T**  
**A**  
**❄ -34°C/-29°F**

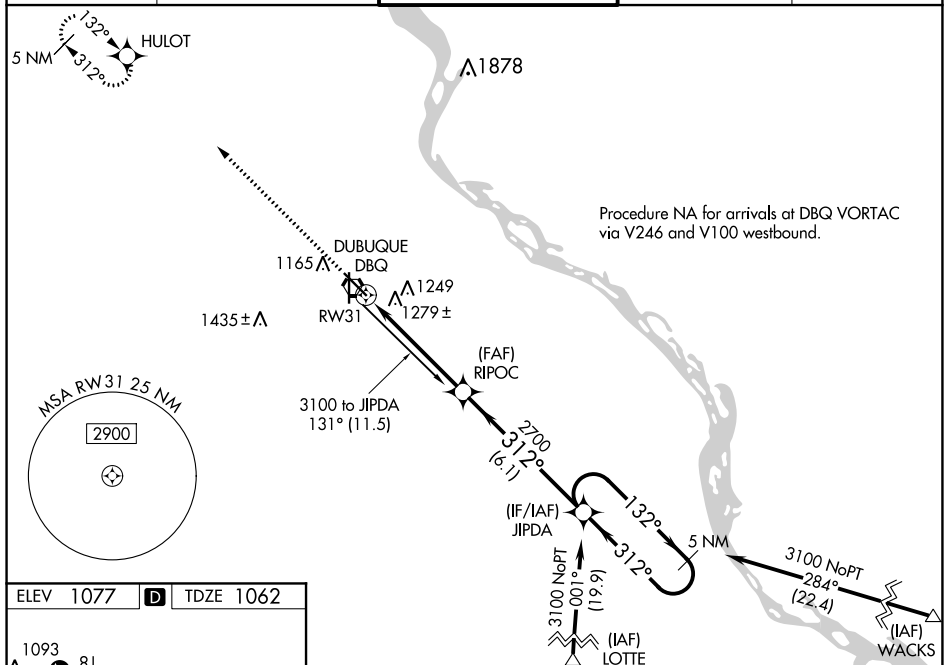
For inop MALSR, increase LPV all Cats visibility to 1½ and LNAV Cats A, B visibility to 1. Baro-VNAV NA when using Monticello altimeter setting. For uncompensated Baro-VNAV systems, LNAV/VNAV NA below -17°C or above 46°C. VDP NA when using Monticello altimeter setting. If local altimeter setting not received, use Monticello altimeter setting and increase all DAs/MDAs 100 feet.

MALSR

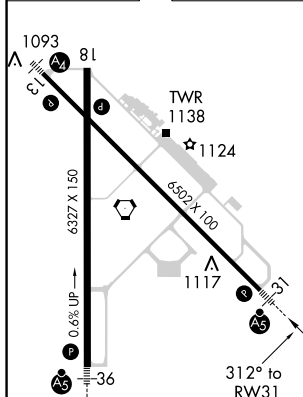


**MISSED APPROACH:**  
Climb to 2800 direct  
HULOT and hold.

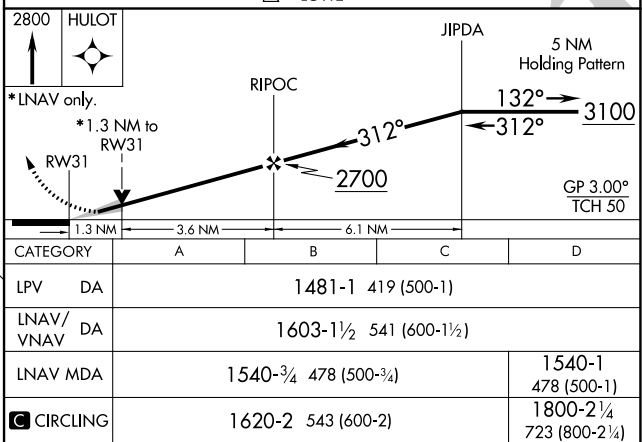
ATIS 127.25	CHICAGO CENTER 133.95 281.4	DUBUQUE TOWER★ 119.5 (CTAF) 0 254.4	GND CON 121.8	UNICOM 122.95
----------------	--------------------------------	--	------------------	------------------



ELEV 1077	<b>D</b>	TDZE 1062
-----------	----------	-----------

HIRL Rwy 13-31 and 18-36 **L**

DUBUQUE, IOWA  
Orig-A 10OCT19



DUBUQUE RGNL (DBQ)

RNAV (GPS) RWY 31

NC-3, 31 DEC 2020 to 28 JAN 2021

NC-3, 31 DEC 2020 to 28 JAN 2021

42°24'N-90°43'W