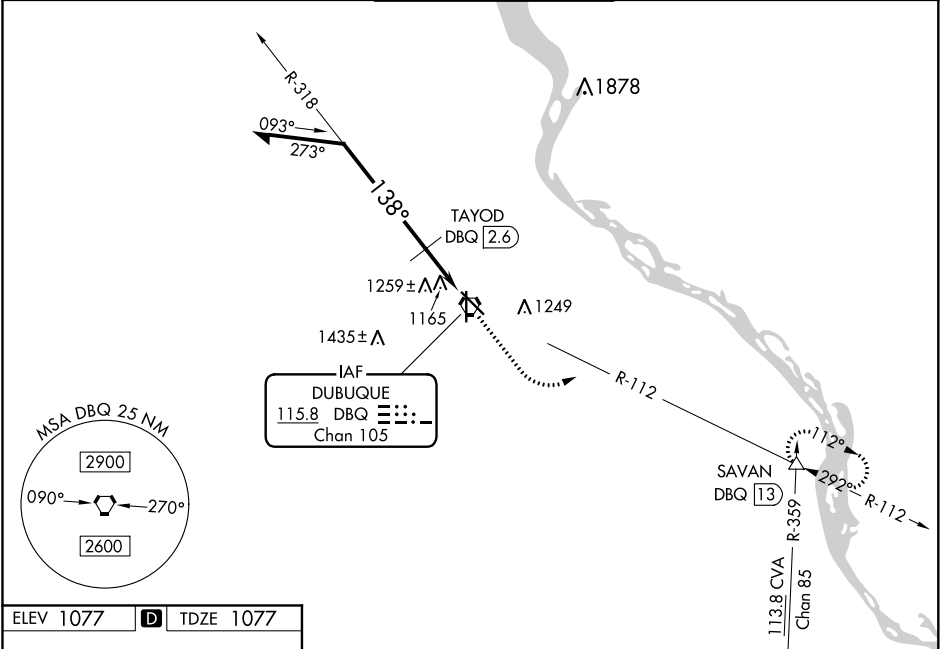


VORTAC DBQ 115.8 Chan 105	APP CRS 138°	Rwy Idg TDZE Apt Elev 6502 1077 1077
---	------------------------	---

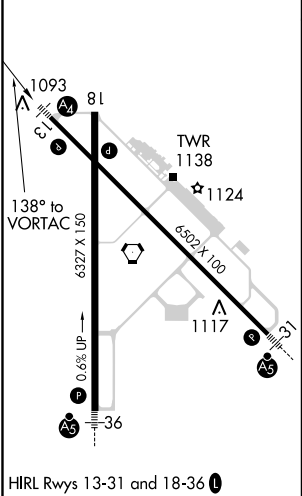
VOR RWY 13
DUBUQUE RGNL (DBQ)

<p>⚠</p> <p>Inop table does not apply to Cat C. If local altimeter setting not received, use Monticello altimeter setting and increase all MDAs 100 feet. VDP NA when using Monticello altimeter setting.</p>	<p>MALS</p> <p>A2</p>	<p>MISSED APPROACH: Climb to 2500 then climbing left turn to 3300 via DBQ VORTAC R-112 to SAVAN INT/13 DME and hold.</p>
--	------------------------------	--

ATIS 127.25	CHICAGO CENTER 133.95 281.4	DUBUQUE TOWER ★ 119.5 (CTAF) 254.4	GND CON 121.8	UNICOM 122.95
-----------------------	---------------------------------------	--	-------------------------	-------------------------



ELEV 1077	D	TDZE 1077
-----------	----------	-----------



VGSI and descent angles not coincident (VGSI Angle 3.00/TCH 44).			
Remain within 10 NM			
<p>DBQ VORTAC</p> <p>2500 3300 SAVAN</p> <p>DBQ R-112</p> <p>*1880 when using Monticello altimeter setting.</p>			
<p>318°</p> <p>2800</p> <p>138°</p> <p>*1780</p> <p>3.03°</p> <p>TCH 50</p> <p>0.8 NM 1.3 NM 0.6</p>			
CATEGORY	A	B	C
S-13	1780-3/4 703 (800-3/4)	1780-2 703 (800-2)	1780-2 1/4 703 (800-2 1/4)
C CIRCLING	1780-1 703 (800-1)	1780-2 703 (800-2)	1800-2 1/4 723 (800-2 1/4)
TAYOD FIX MINIMUMS			
S-13	1520-3/4 443 (500-3/4)	1520-1 1/4 443 (500-1 1/4)	1520-1 1/2 443 (500-1 1/2)
C CIRCLING	1580-1 503 (600-1)	1600-1 1/2 523 (600-1 1/2)	1800-2 1/4 723 (800-2 1/4)

NC-3, 31 DEC 2020 to 28 JAN 2021

NC-3, 31 DEC 2020 to 28 JAN 2021