

WAAS CH <b>61399</b> <b>W10A</b>	APP CRS <b>108°</b>	Rwy Idg TDZE <b>337</b> Apt Elev <b>342</b>
--	------------------------	---

RNAV (GPS) RWY 10

CAPE GIRARDEAU RGNL (CGI)

⚠

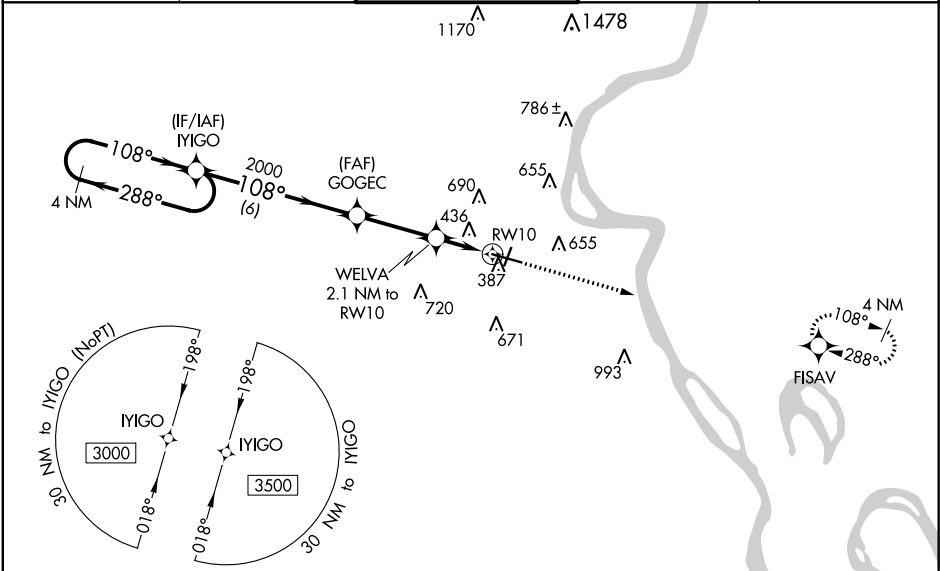
For uncompensated Baro-VNAV systems, LNAV/VNAV NA below -17°C (2°F) or above 54°C (130°F). DME/DME RNP-0.3 NA. When local altimeter setting not received, use Cairo Rgnl altimeter setting and increase all DA 48 feet and all MDA 60 feet; increase LNAV Cat C/D visibilities ½ mile and Circling Cat C/D visibility ¼ mile. Baro-VNAV and VDP NA when using Cairo Rgnl altimeter setting. For inop MALS, increase LNAV/VNAV visibility all Cats to ¾ and LNAV Cats C/D visibility to 1 mile. For inop MALS when using Cairo Rgnl altimeter setting, increase LNAV Cats C/D visibility to 1 ½ mile.

MALS

MISSED APPROACH:

Climb to 3000 direct FISAV and hold.

ASOS <b>120.55</b>	MEMPHIS CENTER <b>133.65 292.15</b>	CAPE GIRARDEAU TOWER ★ <b>125.525 (CTAF) 0</b>	GND CON <b>121.6</b>	UNICOM <b>122.95</b>
-----------------------	--	---	-------------------------	-------------------------



4 NM Holding Pattern

3000 ← 288°  
108° →

GP 3.00°  
TCH 54

IGMO

GOGEC

2000

WELVA 2.1 NM to RW10

\*1060

\*1 NM to RW10

RW10

3000

FISAV

\*LNAV only

CATEGORY	A	B	C	D
LPV DA	537-½ 200 (200-½)			
LNAV/VNAV DA	603-½ 266 (300-½)			
LNAV MDA	700-½ 363 (400-½)		700-⅝ 363 (400-⅝)	
CIRCLING	860-1 518 (600-1)	960-1 618 (700-1)	1000-1¾ 658 (700-1¾)	1080-2¼ 738 (800-2¼)

ELEV 342

TDZE 337

MIRL Rwy 2-20 0

HIRL Rwy 10-28 0

NC-3, 31 DEC 2020 to 28 JAN 2021

NC-3, 31 DEC 2020 to 28 JAN 2021