

LOC/DME I-ALO 111.7 Chan 54	APP CRS 128°	Rwy Idg 8399 TDZE 873 Apt Elev 873
---	------------------------	---

ILS or LOC RWY 12
WATERLOO RGNL (A.L.O.)

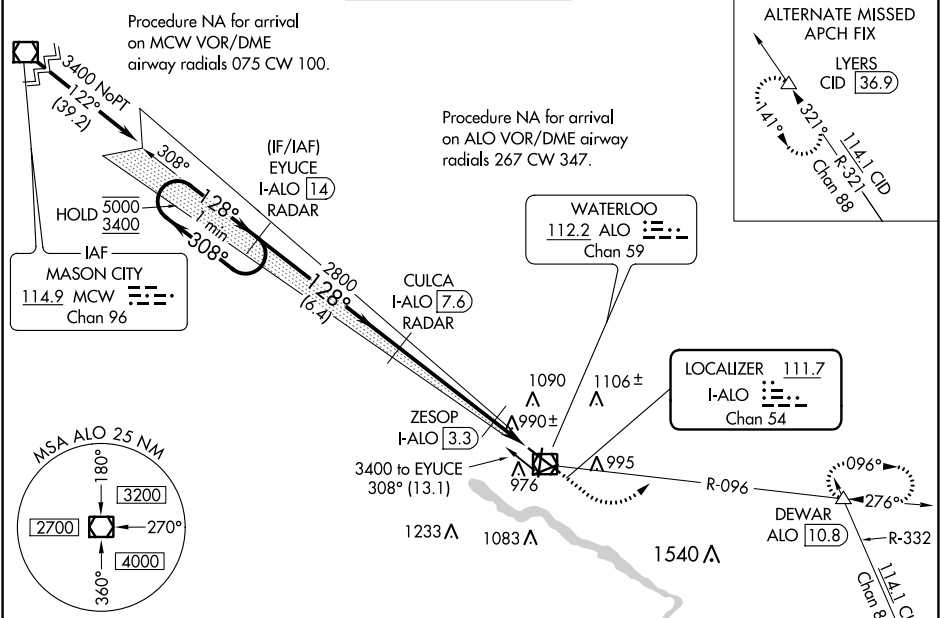
DME or RADAR required.

For inop ALS, increase S-LOC 12 ZESOP FIX MINIMUMS Cats C/D visibility to RVR 5500.
#RVR 1800 authorized with the use of FD or AP or HUD to DA.

MALSR

MISSED APPROACH: Climb to 1400 then climbing left turn to 3300 on ALO VOR/DME R-096 to DEWAR INT/ALO VOR/DME 10.8 DME and hold.

ATIS 120.65	WATERLOO APP CON ★ 118.9 251.15	WATERLOO TOWER ★ 125.075 (CTAF) 0 257.8	GND CON 121.9 269.1	UNICOM 122.95
-----------------------	---	---	-------------------------------	-------------------------



Use I-ALO DME when on localizer course.

One Minute Holding Pattern

GS 3.00° TCH 55

5000 3400 308° 128° 2800 128° 2800

6.4 NM 4.3 NM 0.6 1 NM

1400 3300 DEWAR ALO R-096 *LOC only

CATEGORY	A	B	C	D
S-ILS 12 #	1073/24 200 (200-½)			
S-LOC 12	1420/24 547 (600-½)		1420/60 547 (600-1¼)	
CIRCLING	1420-1 547 (600-1)		1480-1¾ 607 (700-1¾) 1600-2¼ 727 (800-2¼)	
ZESOP FIX MINIMUMS (DME REQUIRED)				
S-LOC 12	1240/24 367 (400-½)		1240/35 367 (400-¾)	
CIRCLING	1360-1 487 (500-1) 1400-1 527 (600-1)		1480-1¾ 607 (700-1¾) 1600-2¼ 727 (800-2¼)	

HIRL Rwy 12-30
MIRL Rwy 6-24
MIRL Rwy 18-36
REIL Rws 6, 18, 24, and 36
FAF to MAP 5.9 NM

Knots	60	90	120	150	180
Min:Sec	5:54	3:56	2:57	2:22	1:58

NC-3, 31 DEC 2020 to 28 JAN 2021

NC-3, 31 DEC 2020 to 28 JAN 2021