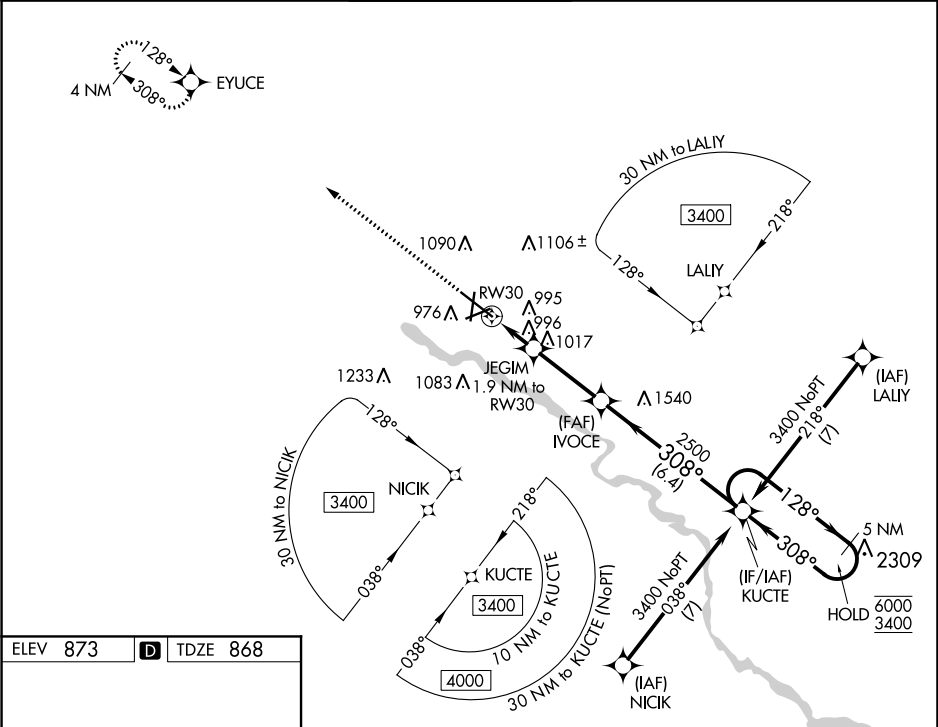


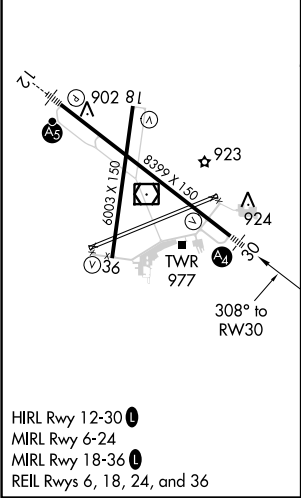
WAAS CH 78201 W30A	APP CRS 308°	Rwy Idg 8399 TDZE 868 Apt Elev 873
--	------------------------	---

RNAV (GPS) RWY 30
WATERLOO RGNL (A.L.O)

RNP APCH. ⚠ For uncompensated Baro-VNAV systems, LNAV/VNAV NA below -20°C or above 54°C. Inop table does not apply LPV all Cats. For inop ALS, increase LNAV/VNAV all Cats visibility to ½ SM.			MALS ⚠ =	MISSED APPROACH: Climb to 3400 direct EYUCE and hold.	
ATIS 120.65	WATERLOO APP CON★ 118.9 251.15	WATERLOO TOWER★ 125.075 (CTAF) 0 257.8	GND CON 121.9 269.1	UNICOM 122.95	



ELEV 873	D	TDZE 868
----------	----------	----------



3400 ↑ EYUCE		JEGIM 1.9 NM to RW30		IVOCE 2500		KUCTE 5 NM Holding Pattern	
*LNAV only		*1.1 NM to RW30		1520*		128° → 6000 ← 308° 3400	
RW30		1.1 NM		0.8		3.1 NM	
				6.4 NM		GP 3.00° TCH 52	
CATEGORY		A		B		C	
LPV DA				1068-¾		200 (200-¾)	
LNAV/ LNAV		DA		1145-¾		277 (300-¾)	
LNAV MDA		1260-¾ 392 (400-¾)		1260-⅞ 392 (400-⅞)			
CIRCLING		1360-1 487 (500-1)		1400-1 527 (600-1)		1480-1¾ 607 (700-1¾) 1600-2¼ 727 (800-2¼)	

NC-3, 31 DEC 2020 to 28 JAN 2021

NC-3, 31 DEC 2020 to 28 JAN 2021