

VOR/DME ALO	APP CRS	Rwy Idg	8399
112.2	133°	TDZE	873
Chan 59		Apt Elev	873

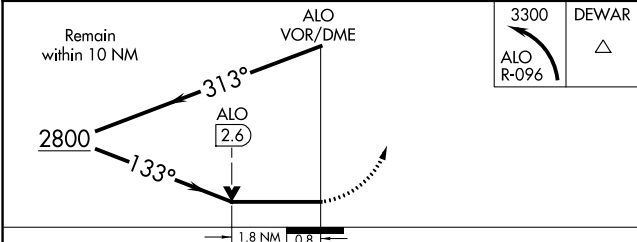
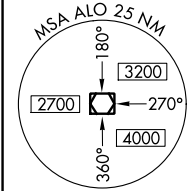
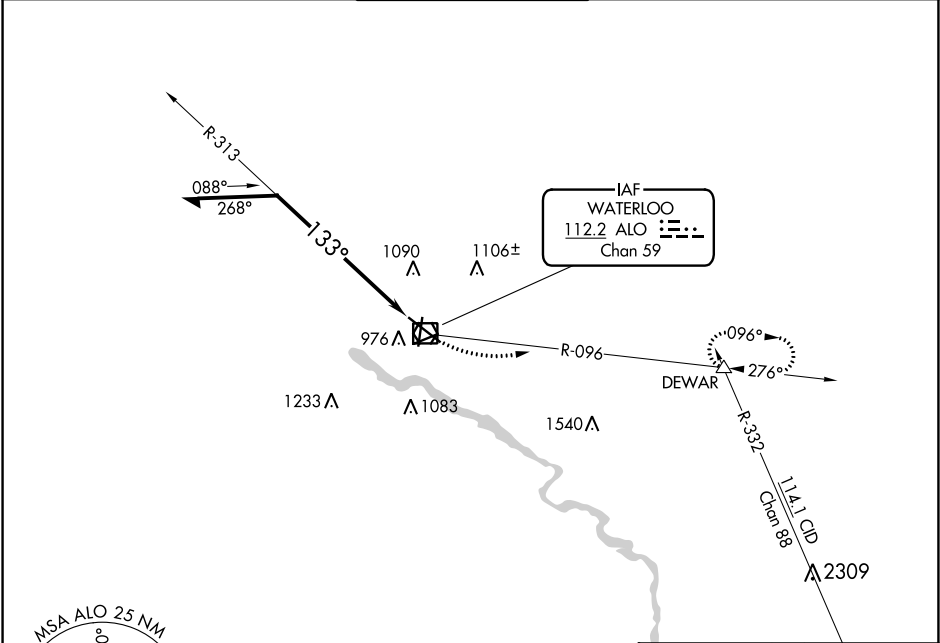
VOR RWY 12  
WATERLOO RGNL (ALO)

**⚠** For inop ALS, increase S-12 Cat C/D visibility to 1¾ SM.

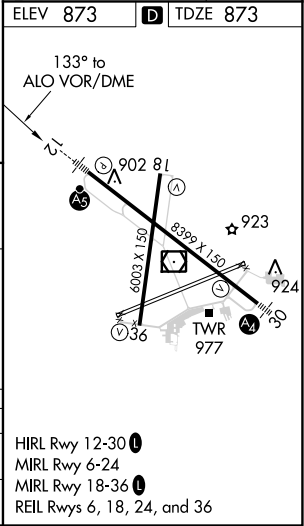
MALSR

MISSED APPROACH: Climbing left turn to 3300 on ALO VOR/DME R-096 to DEWAR INT and hold.

ATIS 120.65	WATERLOO APP CON ★ 118.9 251.15	WATERLOO TOWER ★ 125.075 (CTAF) 257.8	GND CON 121.9 269.1	UNICOM 122.95
----------------	------------------------------------	--	------------------------	------------------



CATEGORY	A	B	C	D
S-12	1500/24 627 (700-½)		1500-1¾ 627 (700-1¾)	
CIRCLING	1500-1 627 (700-1)		1500-1¾ 627 (700-1¾)	1600-2¼ 727 (800-2¼)



NC-3, 31 DEC 2020 to 28 JAN 2021

NC-3, 31 DEC 2020 to 28 JAN 2021