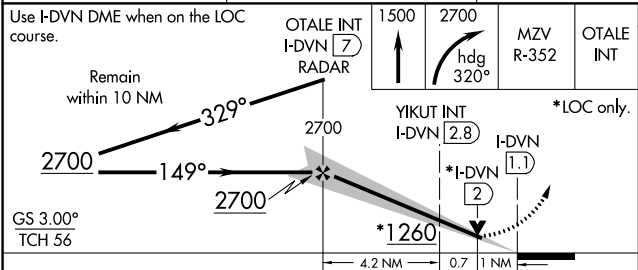
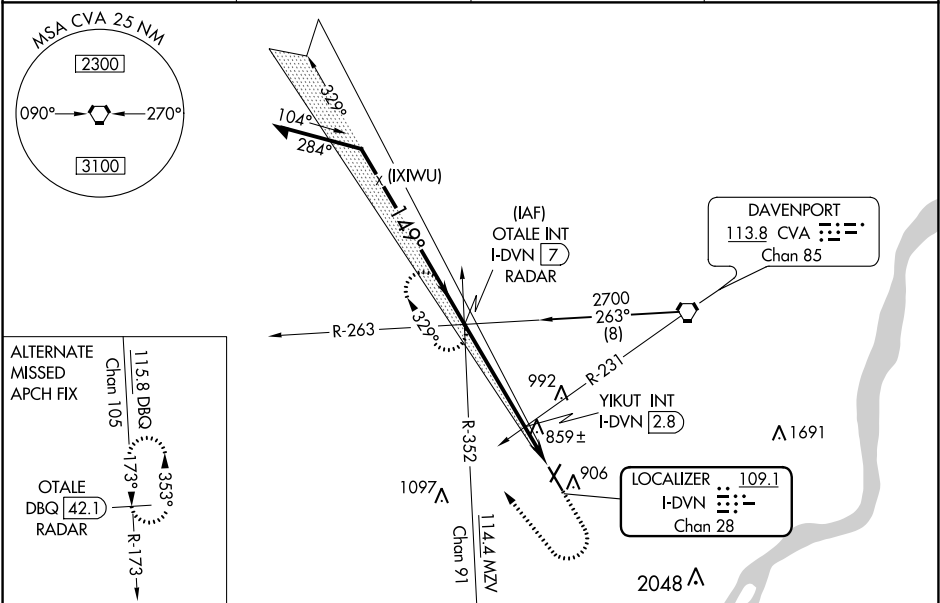


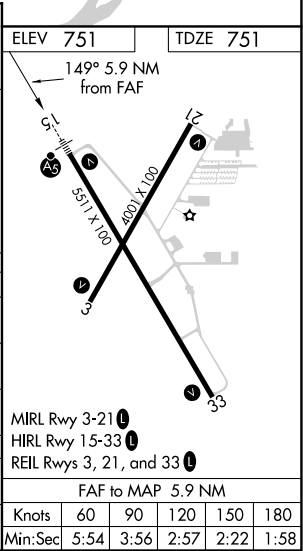
LOC/DME I-DVN <b>109.1</b> Chan <b>28</b>	APP CRS <b>149°</b>	Rwy Idg <b>5511</b> TDZE <b>751</b> Apt Elev <b>751</b>
---	------------------------	---

ILS or LOC RWY 15  
DAVENPORT MUNI (DVN)

<div><div><div><div></div><div></div><div></div></div><div><div></div><div></div><div></div></div></div><div><div></div><div></div><div></div></div></div> <div>For inoperative ALS, increase S-LOC 15 Cat C/D visibility to 1½ SM and YIKUT fix minimums S-LOC 15 Cat C/D to 1 SM.</div>		<div><div>MALSR</div><div><div><div></div><div></div><div></div><div></div><div></div></div><div><div>AS</div><div></div></div></div></div>	MISSED APPROACH: Climb to 1500 then climbing right turn to 2700 on heading 320° and on MZV VOR/DME R-352 to OTOLE INT/I-DVN 7 DME/RADAR and hold.	
ASOS 120.175	QUAD CITY APP CON ★ 125.95 257.8	CLNC DEL 118.35	UNICOM 123.0 (CTAF) 0	



CATEGORY	A	B	C	D
S-ILS 15	951-½ 200 (200-½)			
S-LOC 15	1260-½ 509 (600-1)		1260-1 509 (600-1)	
CIRCLING	1300-1 549 (600-1)		1300-1½ 549 (600-1½)	1320-2 569 (600-2)
YIKUT FIX MINIMUMS				
S-LOC 15	1100-½ 349 (400-½)		1100-⅝ 349 (400-⅝)	
CIRCLING	1300-1 549 (600-1)		1300-1½ 549 (600-1½)	1320-2 569 (600-2)



NC-3, 31 DEC 2020 to 28 JAN 2021

NC-3, 31 DEC 2020 to 28 JAN 2021