

Rwy Idg	4001
TDZE	750
Apt Elev	751

RNAV (GPS) RWY 21
DAVENPORT MUNI (DVN)

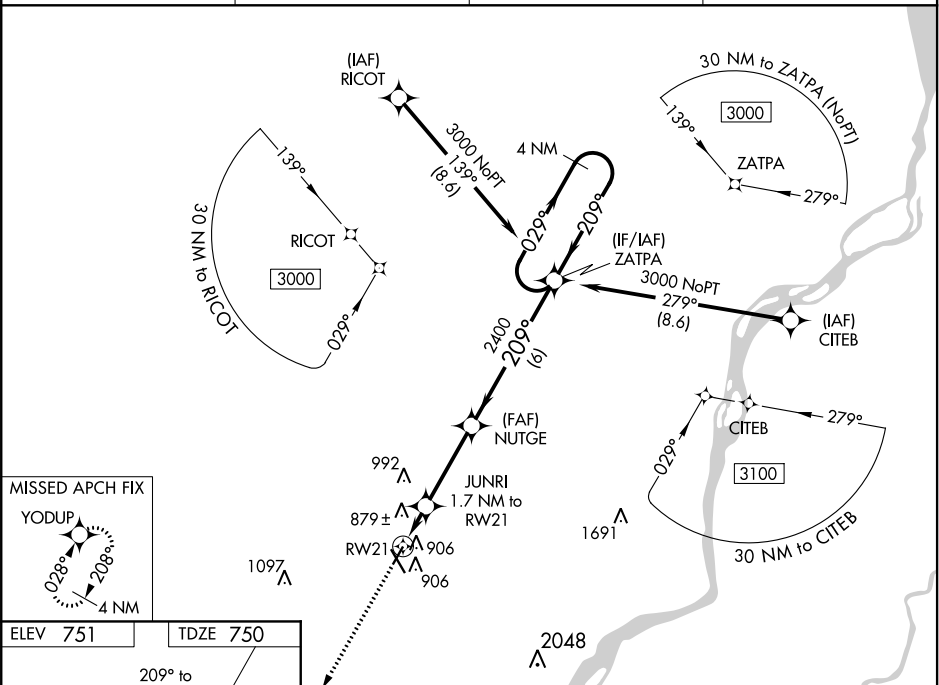
For uncompensated Baro-VNAV systems, LNAV/VNAV NA below -16°C (4°F) or above 54°C (130°F).
Rwy 21 helicopter visibility reduction below 1 SM NA.

MISSED APPROACH: Climb to 3000 direct YODUP and hold.

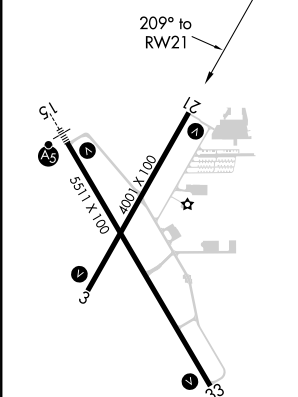
ASOS
120.175

QUAD CITY APP CON★
125.95 257.8

CLNC DEL
118.35

UNICOM
123.0 (CTAF) **L**

ELEV 751	TDZE 750
----------	----------



MIRL Rwy 3-21 **L**
HIRL Rwy 15-33 **L**
REIL Rwy 3, 21, and 33 **L**

Diagram illustrating the ZATPA Holding Pattern. The pattern is defined by a series of turns: 180° at 1340* NM, 209° at 2400 NM, and 029° at 3000 NM. The pattern is 4 NM wide. The diagram also shows the VGSI and RNAV glidepath not coincident (VGSI Angle 3.00/TCH 45).