

VORTAC CVA <u>113.8</u> Chan 85	APP CRS 216°	Rwy Idg TDZE Apt Elev	4001 750 751
---	------------------------	-----------------------------	---

VOR RWY 21
DAVENPORT MUNI (DVN)



ASOS 120.175	QUAD CITY APP CON ★ 125.95 257.8	CLNC DEL 118.35	UNICOM 123.0 (CTAF) 0
------------------------	--	---------------------------	---------------------------------

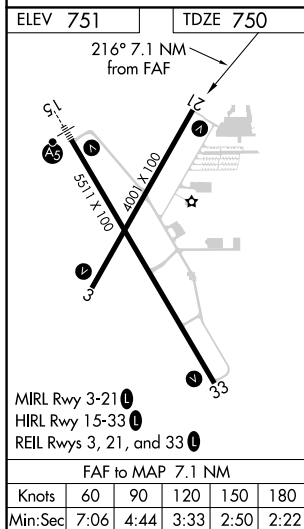
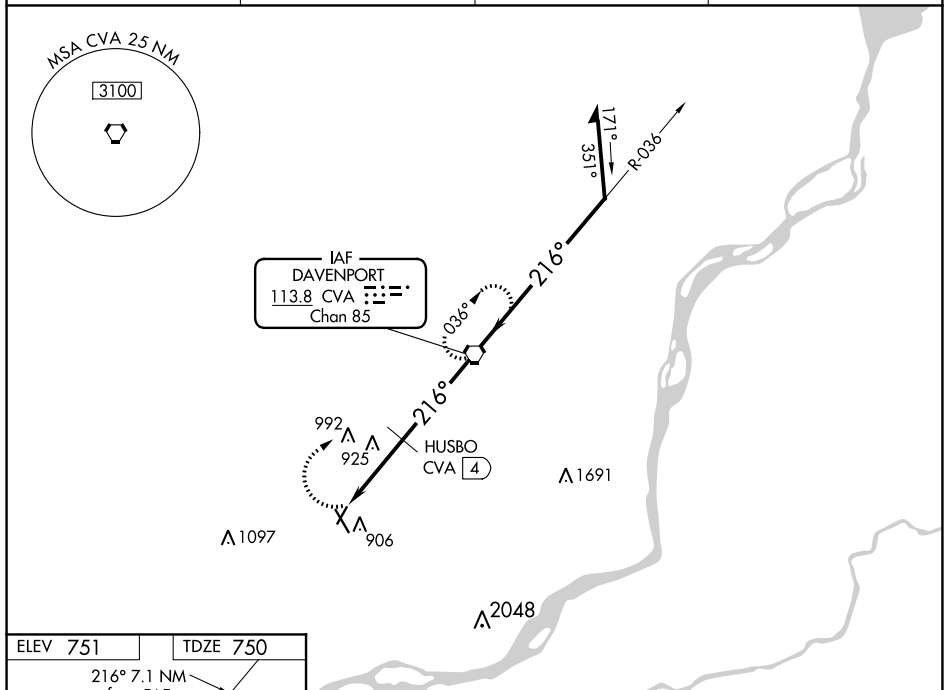


Diagram illustrating the VORTAC station and its associated frequencies:

- VOR Station:** 113.7 MHz (VOR)
- TACAN Station:** 113.7 MHz (TACAN)
- Distances:** 3.1 NM (VOR to VORTAC), 4 NM (TACAN to VORTAC)
- Coverage Area:** 2400 feet radius (VOR station)
- Note:** Remain within 10 NM