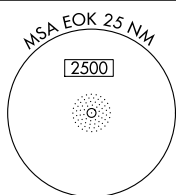


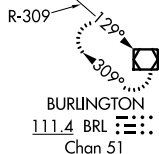
ILS or LOC/DME RWY 26
KEOKUK MUNI (EOK)


MALSR

MISSED APPROACH:
Climb to 2600 then
right turn direct EOK
NDB and hold.

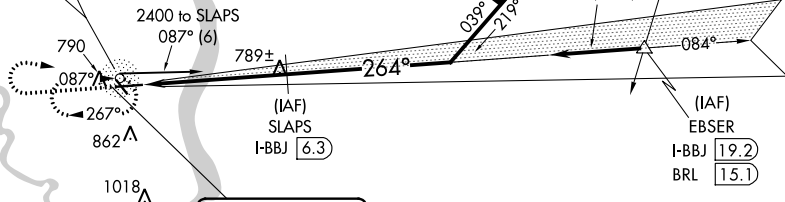
UNICOM
122.8 (CTAF) **L**

ALT MISSED APCH FIX




BURLINGTON
111.4 BRL 
Chan 51

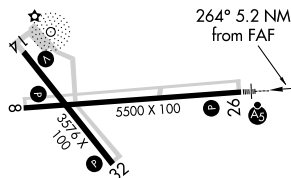
DME or RADAR
REQUIRED



TDZE 671

LOCALIZER 110.9

I-BBJ 
Chan 46



2600	
------	--

EOK



* LOC only

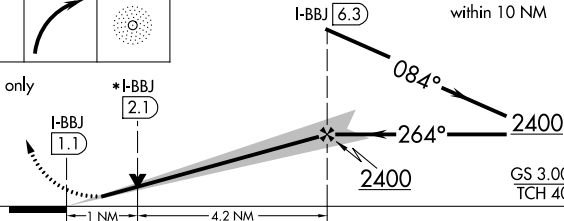
*I-BBJ

100

2.1)

SLAPS

Remain
thin 10 NM



CATEGORY	A	B	C	D
S-ILS 26	871-1/2 200 (200-1/2)			NA
S-LOC 26	1040-1/2 369 (400-1/2)			NA
CIRCLING	1180-1 508 (600-1)		1220-1 1/2 548 (600-1 1/2)	NA

REIL Rwys 8, 14 and 32 **L**
MIRL Rwys 8-26 and 14-32 **L**

KEOKUK, IOWA
Orig-D 14SEP17

KEOKUK MUNI (EOK)

40°28'N-91°26'W

ILS or LOC/DME RWY 26