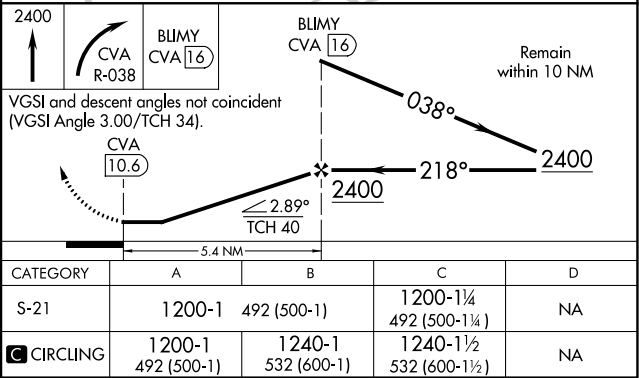
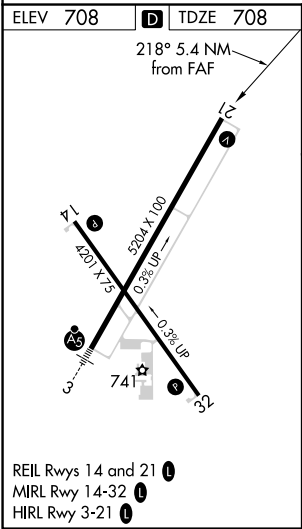
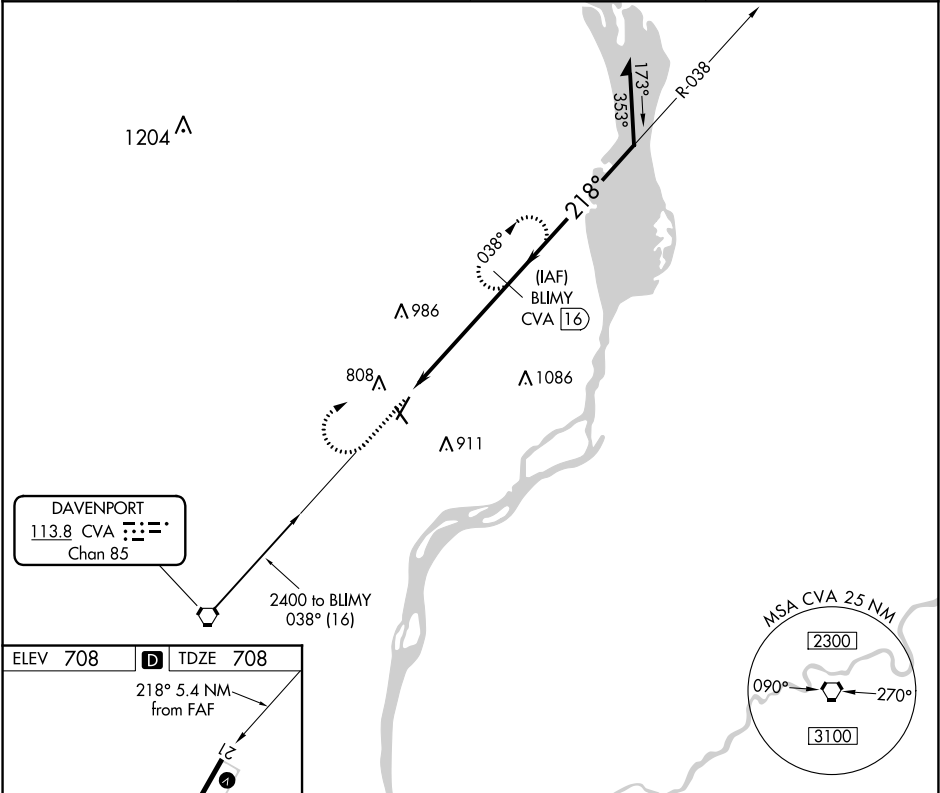


VORTAC CVA <b>113.8</b> Chan <b>85</b>	APP CRS <b>218°</b>	Rwy Idg TDZE Apt Elev <b>5204</b> <b>708</b> <b>708</b>
--	------------------------	--

VOR/DME RWY 21  
CLINTON MUNI (CWI)

-35°C/-31°F	Rwy 21 helicopter visibility reduction below ¾ SM NA.	MISSED APPROACH: Climb to 2400 then right turn via CVA R-038 to BLIMY 16 DME and hold.
-------------	---	--

AWOS-3PT <b>125.525</b>	QUAD CITY APP CON ★ <b>125.95 257.8</b>	CLNC DEL <b>118.5 0</b>	UNICOM <b>122.8</b> (CTAF)
----------------------------	--	----------------------------	-------------------------------



NC-3, 31 DEC 2020 to 28 JAN 2021

NC-3, 31 DEC 2020 to 28 JAN 2021