

WAAS CH 82615 W30A	APP CRS 305°	Rwy Idg TDZE 1142 Apt Elev 1157
--	------------------------	---

RNAV (GPS) RWY 30

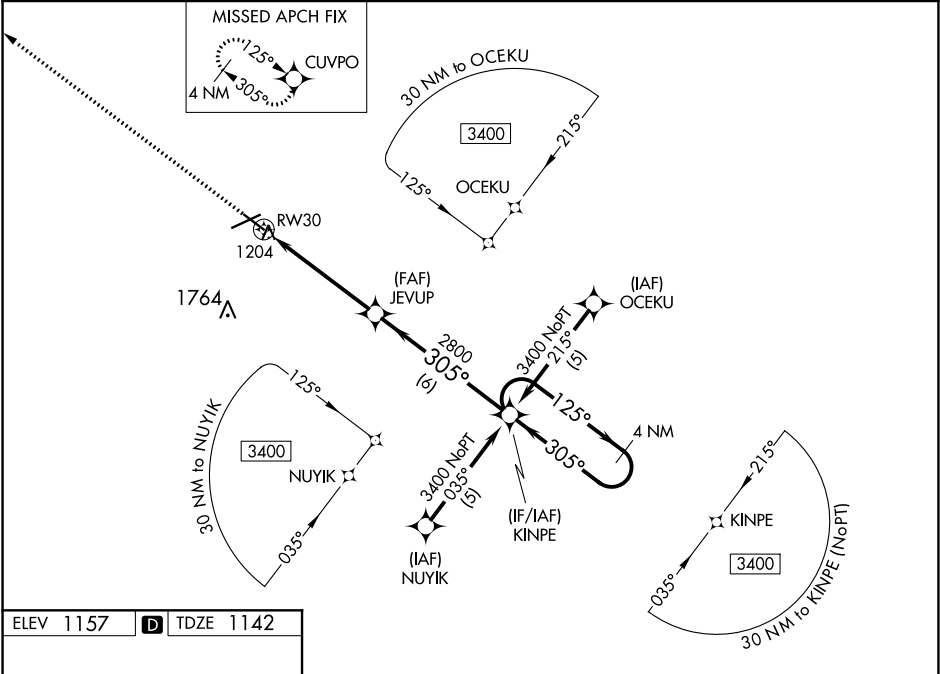
FORT DODGE RGNL (FOD)

⚠

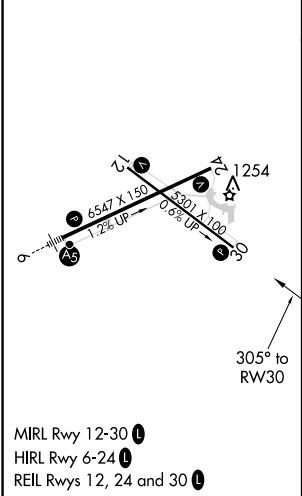
For uncompensated Baro-VNAV systems, LNAV/VNAV NA below -17°C (2°F) or above 54°C (130°F). DME/DME RNP-0.3 NA. Helicopter visibility below ¼ SM NA. VDP and Baro-VNAV NA when using Webster City altimeter setting. When local altimeter setting not received, use Webster City altimeter setting and increase all DA 42 feet and all MDA 60 feet, increase LPV all Cats and LNAV Cats C and D visibility ¼ mile.

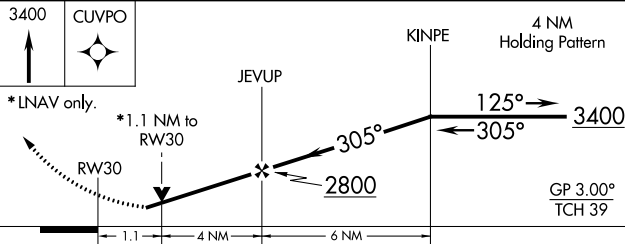
MISSED APPROACH: Climb to 3400 direct CUVPO and hold.

AWOS-3PT 118.775	MINNEAPOLIS CENTER 134.0 288.3	UNICOM 123.0 (CTAF) 1
----------------------------	--	---------------------------------



ELEV 1157	D	TDZE 1142
-----------	----------	-----------



3400 ↑	CUVPO ✦			
*LNAV only.				
RW30				
1.1 4 NM 6 NM				
JEVUP				
KINPE				
4 NM Holding Pattern				
125° 305° 3400				
2800				
GP 3.00° TCH 39				
CATEGORY	A	B	C	D
LPV DA	1424-1 282 (300-1)			
LNAV/ VNAV DA	1474-1¼ 332 (400-1¼)			
LNAV MDA	1520-1 378 (400-1)			1520-1¼ 378 (400-1¼)
CIRCLING	1560-1 403 (500-1)	1620-1 463 (500-1)	1620-1½ 463 (500-1½)	1720-2 563 (600-2)