

WAAS CH <b>61015</b> <b>W06A</b>	APP CRS <b>063°</b>	Rwy Idg TDZE <b>1107</b> Apt Elev <b>1157</b>
--	------------------------	---

RNAV (GPS) RWY 6

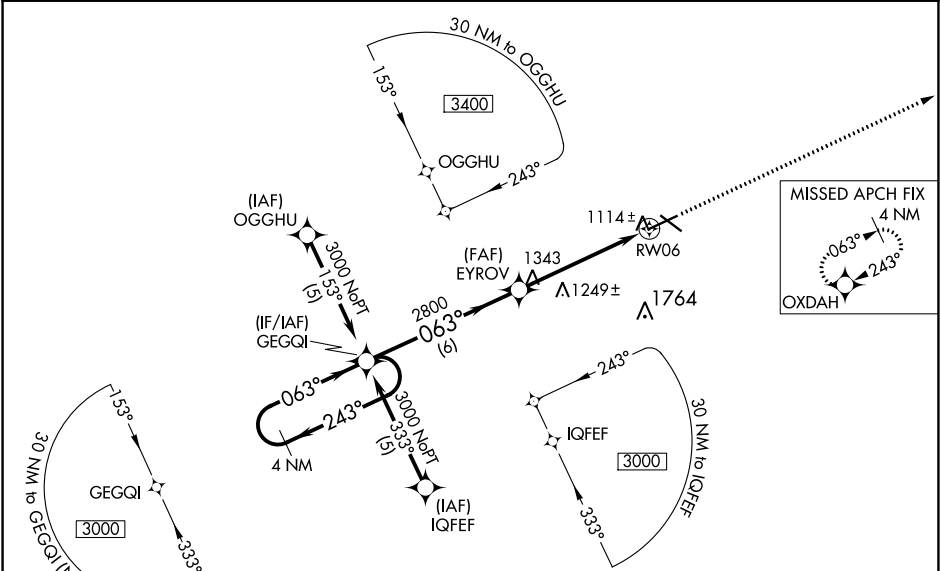
FORT DODGE RGNL (FOD)

Baro-VNAV NA when using Webster City altimeter setting. For uncompensated Baro-VNAV systems, LNAV/VNAV NA below -17°C (2°F) or above 46°C (114°F). DME/DME RNP-0.3 NA. VDP NA when using Webster City altimeter setting. When local altimeter setting not received, use Webster City altimeter setting and increase all DA 42 feet and all MDA 60 feet, increase visibility LNAV-VNAV all Cats and LNAV Cats C and D ¼ mile. For inoperative MALSR when using Webster City altimeter setting, increase LPV all Cats visibility to 1 mile.

MALSR

MISSED APPROACH:  
Climb to 3000 direct  
OXDAH and hold.

AWOS-3PT <b>118.775</b>	MINNEAPOLIS CENTER <b>134.0 288.3</b>	UNICOM <b>123.0 (CTAF) 1</b>
----------------------------	--	---------------------------------



ELEV 1157

D

TDZE 1107

4 NM Holding Pattern

GP 3.00°  
TCH 54

3000 ← 243°  
063° →

GEGQI

EYROV

RW06

OXDAH

\*1.2 NM to RW06

\*LNAV only.

6 NM

4 NM

1.2

CATEGORY	A	B	C	D
LPV DA		1307-½	200 (200-½)	
LNAV/VNAV DA		1525-1	418 (400-1)	
LNAV MDA	1500-½	393 (400-½)		1500-1 393 (400-1)
CIRCLING	1560-1 403 (500-1)	1620-1 463 (500-1)	1620-1½ 463 (500-1½)	1720-2 563 (600-2)

063° to RW06

MIRL Rwy 12-30 1

HIRL Rwy 6-24 1

REIL Rwy 12, 24 and 30 1