

WAAS CH 86936 W14A	APP CRS 141°	Rwy Idg 5600 TDZE 953 Apt Elev 953
--	------------------------	---

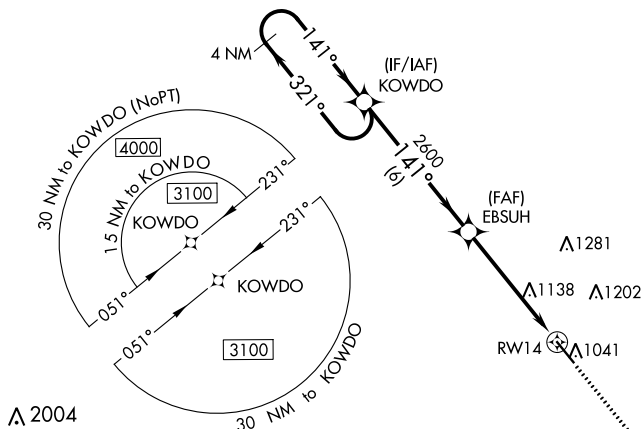
RNAV (GPS) RWY 14

NEWTON MUNI-EARL JOHNSON FIELD (TNU)

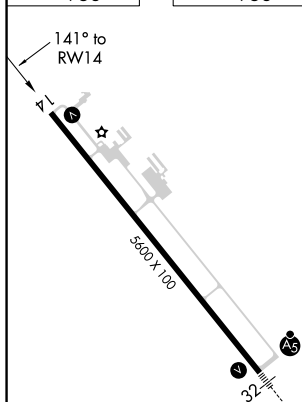
⚠ DME/DME RNP-0.3 NA. When local altimeter setting not received use Des Moines altimeter setting and increase all DA/MA 80 feet; increase LPV and LNAV/VNAV all Cuts and LNAV Cuts C/D and Circling Cut C/D visibility $\frac{1}{4}$ mile. For uncompensated Baro-VNAV systems, LNAV/VNAV NA below -13°C (9°F) or above 54°C (130°F). Rwy 14 helicopter visibility reduction below $\frac{3}{4}$ SM NA. Baro-VNAV and VDP NA when using Des Moines altimeter setting.

MISSED APPROACH: Climb to 2700 direct UBHIT and hold.

AWOS-3 132.275	DES MOINES APP CON 123.9 307.15	CLNC DEL 126.3	UNICOM 122.8 (CTAF) 0
--------------------------	---	--------------------------	---------------------------------



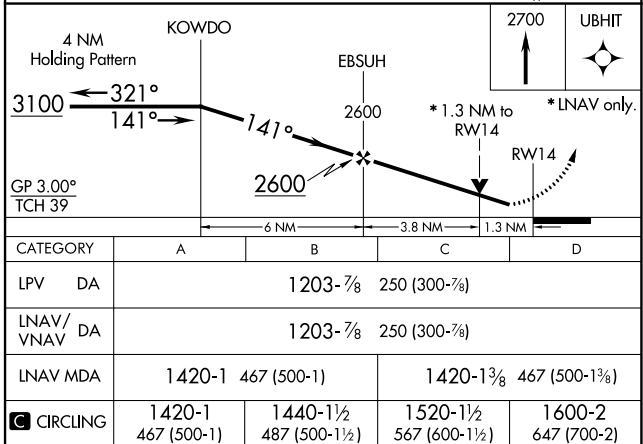
ELEV 953		TDZE 953
----------	--	----------

REIL Rwy 14 **L**

MIRL Rwy 14-32 L

NEWTON, IOWA

Amdt 1B 21JUN18



NEWTON, IOWA

Amdt 1B 21JUN18

NEWTON MUNI-EARL JOHNSON FIELD (TNU)

41°40'N-93°01'W

RNAV (GPS) RWY 14