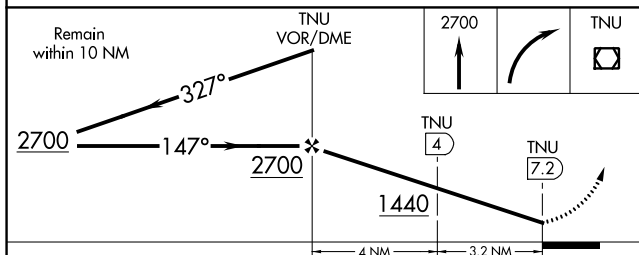
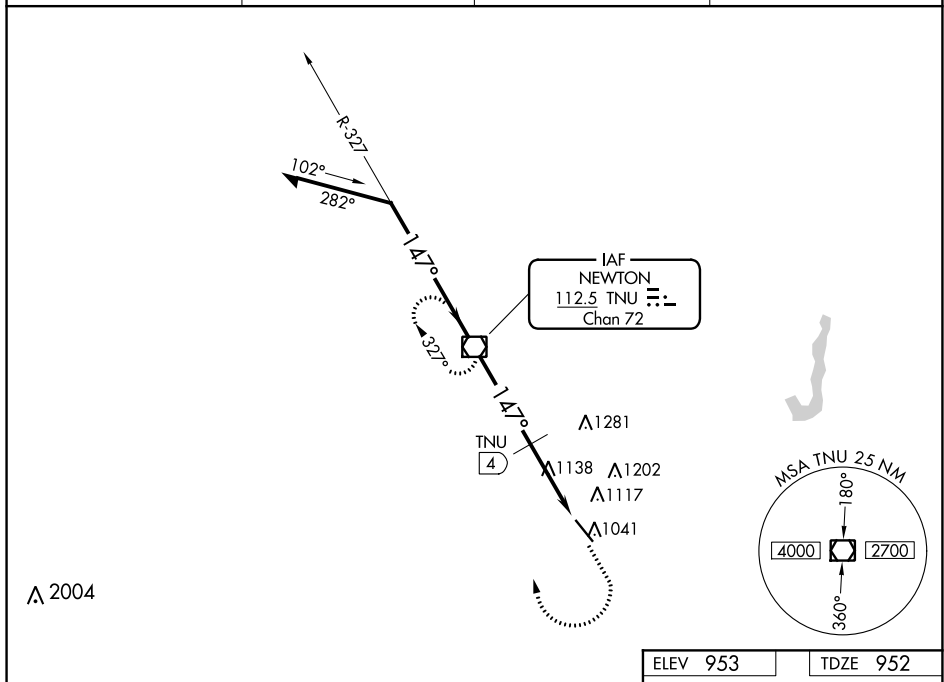



| | | |
|---|------------------------|---|
| VOR/DME TNU 112.5 Chan 72 | APP CRS 147° | Rwy Idg 5600 TDZE 952 Apt Elev 953 |
|---|------------------------|---|

VOR RWY 14

NEWTON MUNI-EARL JOHNSON FIELD (TNU)

| | | | |
|---|---|---|--|
| V Rwy 14 helicopter visibility reduction below ¾ SM NA. | | MISSED APPROACH: Climb to 2700, then right turn direct TNU VOR/DME and hold. | |
| AWOS-3 132.275 | DES MOINES APP CON 123.9 307.15 | CLNC DEL 126.3 | UNICOM 122.8 (CTAF) 0 |



| CATEGORY | A | B | C | D |
|--|-----------------------|-----------------------|--|--|
| S-14 | 1440-1 | 488 (500-1) | 1440-1 $\frac{3}{8}$ 488 (500-1 $\frac{3}{8}$) | 1440-1 $\frac{1}{2}$ 488 (500-1 $\frac{1}{2}$) |
| CIRCLING | 1440-1 | 487 (500-1) | 1520-1 $\frac{1}{2}$ 567 (600-1 $\frac{1}{2}$) | 1600-2 647 (700-2) |
| DME MINIMUMS | | | | |
| S-14 | 1400-1 | 448 (500-1) | 1400-1 $\frac{3}{8}$ 448 (500-1 $\frac{3}{8}$) | 1400-1 $\frac{1}{2}$ 448 (500-1 $\frac{1}{2}$) |
|  CIRCLING | 1420-1 467 (500-1) | 1440-1 487 (500-1) | 1520-1 $\frac{1}{2}$ 567 (600-1 $\frac{1}{2}$) | 1600-2 647 (700-2) |

