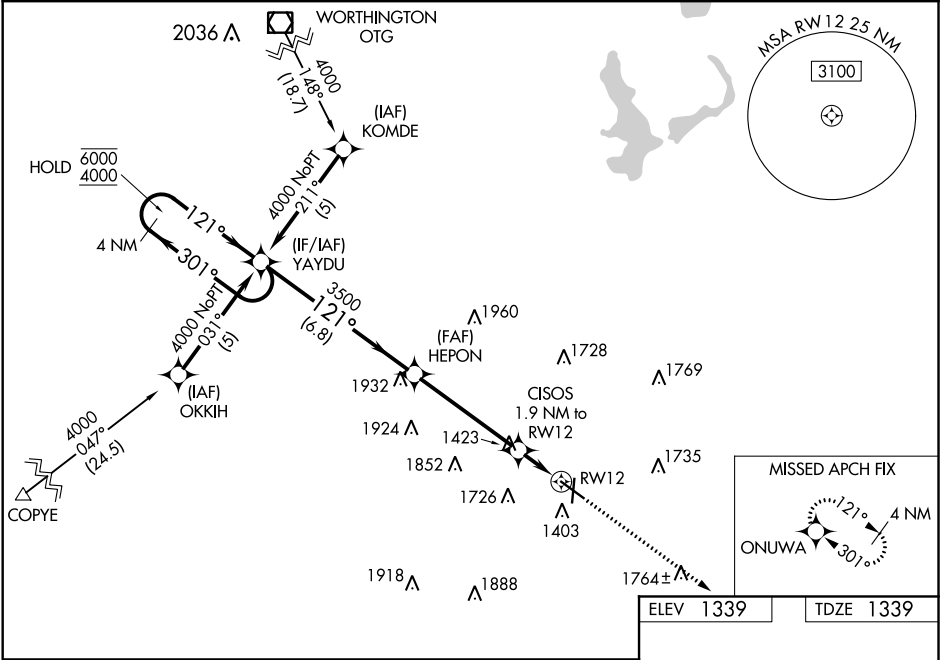


WAAS CH 56517 W12A	APP CRS 121°	Rwy Idg TDZE Apt Elev	6001 1339 1339
--	------------------------	-----------------------------	---

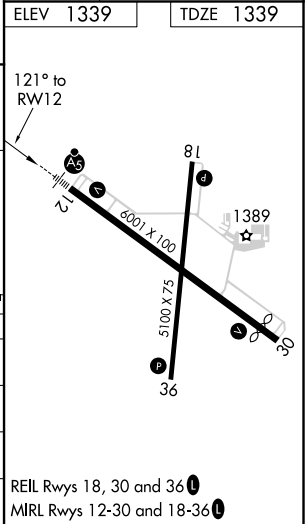
RNAV (GPS) RWY 12
SPENCER MUNI (SPW)

RNP APCH. -32°C	For uncompensated Baro-VNAV systems, LNAV/VNAV NA below -17°C or above 54°C. For inop ALS, increase LNAV/VNAV all Cats visibility to 1½ SM and LNAV Cat C/D to 1½ SM.	MALSR 	MISSED APPROACH: Climb to 4000 direct ONUWA and hold.
------------------------	---	-----------	--

ASOS 126.625	MINNEAPOLIS CENTER 127.75 257.7	UNICOM 123.0 (CTAF)
------------------------	---	-------------------------------



VGSI and RNAV glidepath not coincident (VGSI Angle 3.00/TCH 45).				
4 NM Holding Pattern				
6000 ← 301° 4000 ← 121°				
GP 3.00° TCH 53				
YAYDU HEPON CISOS RW12				
3500 3500 1.9 NM to RW12 *1.1 NM to RW12				
*2000				
6.8 NM 4.6 NM 0.8 NM 1.1 NM				
CATEGORY	A	B	C	D
LPV DA	1539-½		200 (200-½)	
LNAV/VNAV DA	1734-¾		395 (400-¾)	
LNAV MDA	1740-½	401 (500-½)	1740-¾ 401 (500-¾)	1740-1 401 (500-1)
CIRCLING	1740-1 401 (500-1)	1800-1 461 (500-1)	2100-2¼ 761 (800-2¼)	2100-2½ 761 (800-2½)



NC-3, 31 DEC 2020 to 28 JAN 2021

NC-3, 31 DEC 2020 to 28 JAN 2021