

WAAS CH <b>58038</b> <b>W12A</b>	APP CRS <b>125°</b>	Rwy Idg <b>4000</b> TDZE <b>1121</b> Apt Elev <b>1125</b>
--	------------------------	---

RNAV (GPS) RWY 12

NORTHEAST IOWA RGNL (CCY)

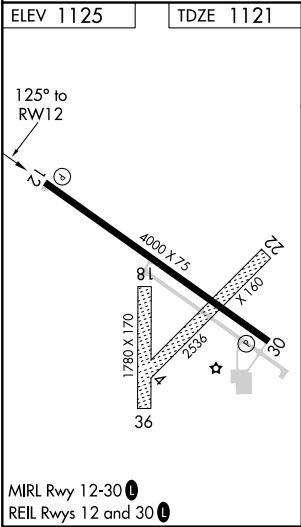
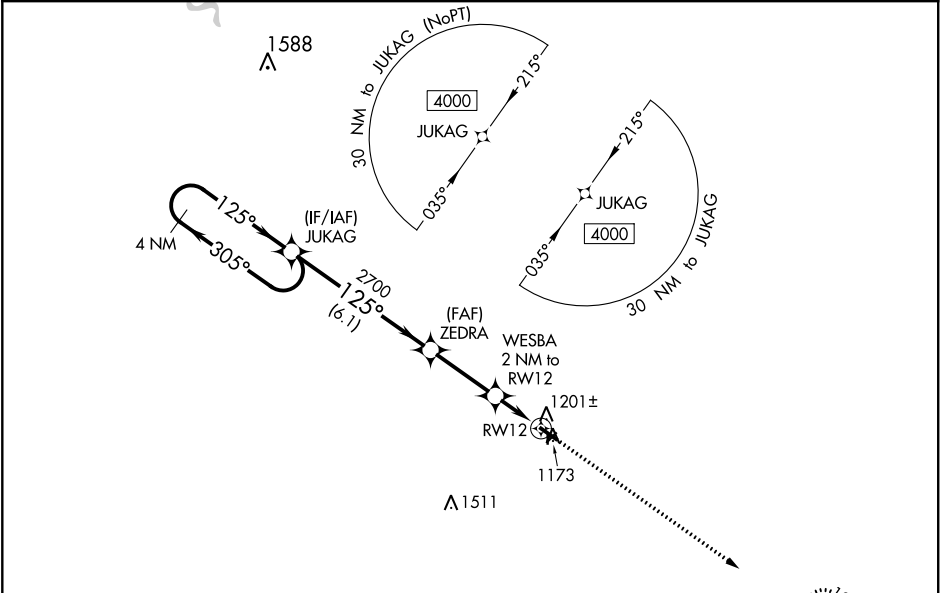
▼

▲

For uncompensated Baro-VNAV systems, LNAV/VNAV NA below -17°C (2°F) or above 54°C (130°F). DME/DME RNP-0.3 NA. When local altimeter setting not received, use Waterloo altimeter setting and increase all DA 110 feet and visibilities ¼ mile. Increase all MDA 120 feet and increase LNAV Cat C visibility ¾ mile, and Circling visibility Cat C ½ mile. VDP and Baro-VNAV NA when using Waterloo altimeter setting. Circling Rwy 4-22 and 18-36 NA.

MISSED APPROACH: Climb to 4000 direct IJBU and hold, continue climb-in-hold to 4000.

AWOS-3 <b>125.525</b>	WATERLOO APP CON ★ <b>118.9 251.15</b>	UNICOM <b>122.8</b> (CTAF) <b>0</b>
--------------------------	---	--



<div>4 NM Holding Pattern</div> <div>JUKAG</div>		<div>VGSI and RNAV glidepath not coincident (VGSI Angle 3.00/TCH 26).</div>		<div>4000</div> <div>↑</div>		<div>IJBU</div> <div>✦</div>
<div>4000</div> <div>← 305°</div> <div>125° →</div> <div>GP 3.00° TCH 40</div>		<div>ZEDRA</div> <div>2700</div>	<div>WESBA</div> <div>2 NM to RW12</div>	<div>*LNAV only</div>		
		<div>2700</div>	<div>*1780</div>	<div>*1 NM to RW12</div>	<div>RW12</div>	
		<div>6.1 NM</div>	<div>2.9 NM</div>	<div>1 NM</div>	<div>1 NM</div>	
CATEGORY	A	B	C	D		
LPV DA		1371-1 250 (300-1)		NA		
LNAV/ VNAV DA		1371-1 250 (300-1)		NA		
LNAV MDA		1460-1 339 (400-1)		NA		
CIRCLING	1520-1 395 (400-1)	1580-1 455 (500-1)	1760-1¾ 635 (700-1¾)	NA		