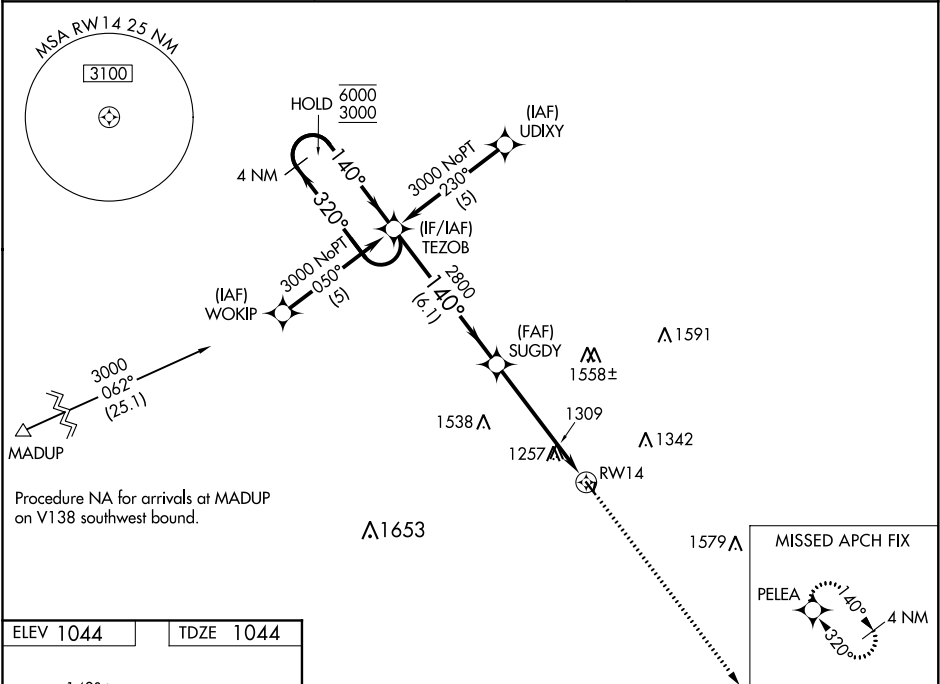


WAAS CH <b>40219</b> <b>W14A</b>	APP CRS <b>140°</b>	Rwy ldg <b>3200</b> TDZE <b>1044</b> Apt Elev <b>1044</b>
--	------------------------	---

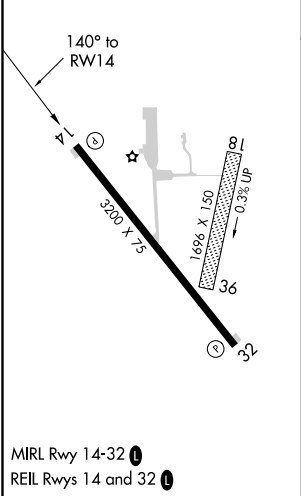
RNAV (GPS) RWY 14  
JEFFERSON MUNI (EFW)

RNP APCH.	MISSED APPROACH: Climb to 3000 direct PELEA and hold.
Procedure NA at night. Rwy 14 helicopter visibility reduction below 1 SM NA. Baro-VNAV NA. Use Perry altimeter setting.	

PRO AWOS-3 <b>118.0</b>	MINNEAPOLIS CENTER <b>134.0 288.3</b>	UNICOM <b>122.8 (CTAF) 0</b>
----------------------------	--	---------------------------------



ELEV <b>1044</b>	TDZE <b>1044</b>
------------------	------------------



VGSI and RNAV glidepath not coincident (VGSI Angle 3.00/TCH 28).				3000	PELEA
4 NM Holding Pattern				↑	✧
6000 ← 320° 3000 ← 140°				SUGDY 2800	
GP 3.00° TCH 40				RWY 14	
				6.1 NM	5.3 NM
CATEGORY	A	B	C	D	
LPV DA	1330-1	286 (300-1)	NA		
LNAV/VNAV DA	1907-3	863 (900-3)	NA		
LNAV MDA	1780-1	736 (800-1)	NA		
CIRCLING	1780-1 736 (800-1)	1820-1¼ 776 (800-1¼)	NA		

NC-3, 31 DEC 2020 to 28 JAN 2021

NC-3, 31 DEC 2020 to 28 JAN 2021