

| | | |
|--|------------------------|---|
| WAAS CH 82304 W34A | APP CRS 349° | Rwy Idg 4797 TDZE 1319 Apt Elev 1319 |
|--|------------------------|---|

RNAV (GPS) RWY 34

ESTHERVILLE MUNI (EST)

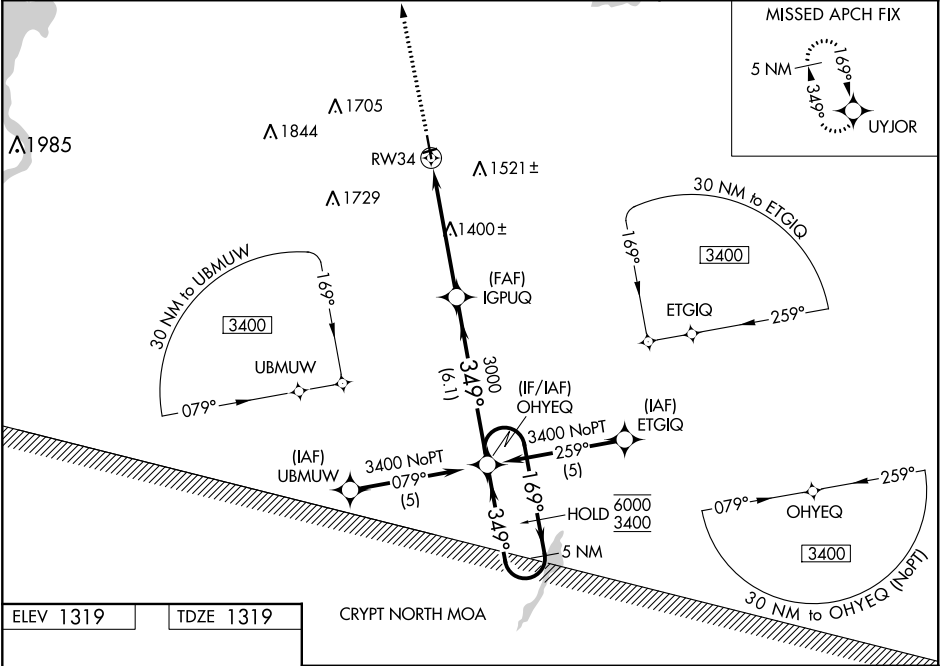
RNP APCH.

⚠

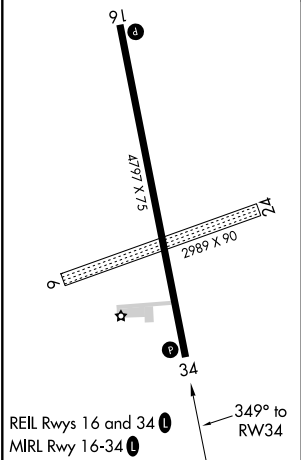
Circling NA to Rwy 6 and 24. Baro-VNAV and VDP NA when using Jackson altimeter setting. For uncompensated Baro-VNAV systems, LNAV/VNAV NA below -17°C or above 54°C. When local altimeter not received, use Jackson altimeter setting and increase all DA/MDA 60 feet.

MISSED APPROACH: Climb to 3400 direct UYJOR and hold.

| | | |
|------------------------|---|--|
| ASOS 121.425 | MINNEAPOLIS CENTER 127.75 257.7 | UNICOM 122.8 (CTAF) 0 |
|------------------------|---|--|



| | |
|-----------|-----------|
| ELEV 1319 | TDZE 1319 |
|-----------|-----------|



3400 UYJOR

VGSI and RNAV glidepath not coincident.

*LNAV only

↑

✦

*1.1 NM to RW34

RW34

IGPUQ

3000

349°

OHYEQ

5 NM Holding Pattern

169° → 6000

← 349° 3400

GP 3.00°

TCH 42

1.1 NM

4 NM

6.1 NM

| CATEGORY | A | B | C | D |
|-------------------|-----------------------|-----------------------|---|----|
| LPV DA | 1569-1 | 250 (300-1) | | NA |
| LNAV/VNAV DA | 1629-1 | 310 (400-1) | | NA |
| LNAV MDA | 1700-1 | 381 (400-1) | | NA |
| C CIRCLING | 1720-1 401 (500-1) | 1840-1 521 (600-1) | | NA |

ESTHERVILLE, IOWA
Amdt 1A 08NOV18

43°24'N-94°45'W

ESTHERVILLE MUNI (EST)
RNAV (GPS) RWY 34