

VOR/DME JWJ  
**109.4**  
Chan **31**

APP CRS  
**120°**

Rwy Idg  
TDZE  
Apt Elev  
**5007**  
**974**  
**975**

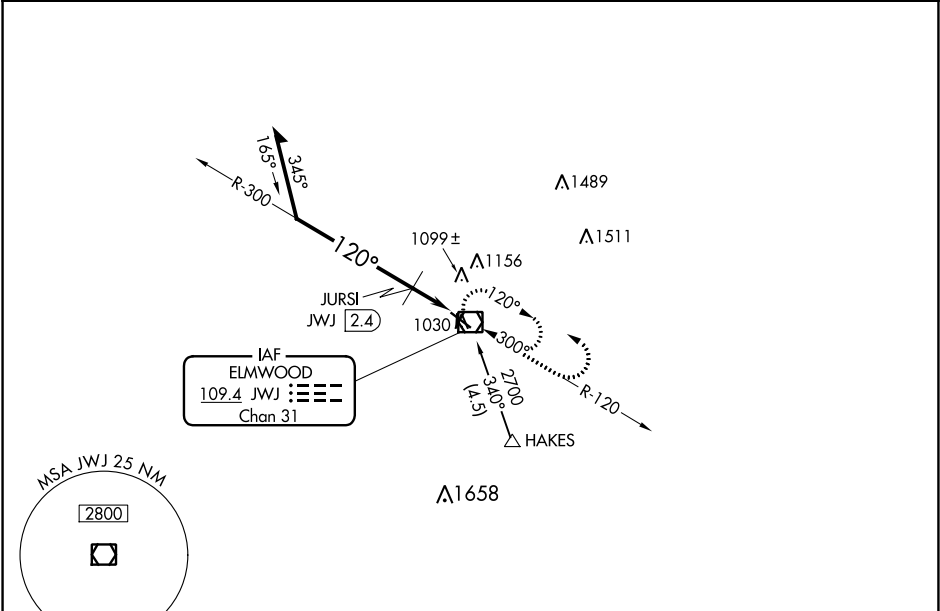
VOR RWY 13  
MARSHALLTOWN MUNI (MIW)

⚠

Visibility reduction by helicopters NA. When local altimeter setting not received, use Grinnell altimeter setting and increase all MDA 80 feet; increase S-13 Cat C/D visibility ¼ SM and Circling Cat C visibility ⅛ SM and Cat D visibility ¼ SM, increase JURSI fix minimums Circling Cat D visibility ¼ SM.

MISSED APPROACH: Climb to 2700 then left turn direct JWJ VOR/DME and hold.

ASOS <b>128.325</b>	WATERLOO APP CON ★ <b>120.9</b>	CLNC DEL <b>120.9</b>	UNICOM <b>122.8</b> (CTAF) <b>0</b>
------------------------	------------------------------------	--------------------------	--



ELEV 975      TDZE 974

Remain within 10 NM

2700

120°

300°

JURSI JWJ 2.4

3.11°

TCH 42

1.7 NM

0.8

1560

2700

120° to VOR/DME

JWJ

\*1640 when using Grinnell altimeter setting.

CATEGORY	A	B	C	D
S-13	1560-1	586 (600-1)	1560-1½ 586 (600-1½)	1560-1¾ 586 (600-1¾)
CIRCLING	1560-1	586 (600-1)	1560-1¾ 586 (600-1¾)	1840-2¾ 865 (900-2¾)
JURSI FIX MINIMUMS				
S-13	1360-1 386 (400-1)		1360-1¼ 386 (400-1¼)	
CIRCLING	1400-1 426 (500-1)	1440-1 466 (500-1)	1460-1½ 485 (500-1½)	1840-2¾ 865 (900-2¾)

MIRL Rwy 13-31 and 18-36

REIL Rwy 13 and 31

MARSHALLTOWN, IOWA

Amdt 2A 23APR20

42°07'N-92°55'W

MARSHALLTOWN MUNI (MIW)

VOR RWY 13