

WAAS CH 90409 W12A	APP CRS 120°	Rwy Idg TDZE Apt Elev	5000 1274 1274
--	------------------------	-----------------------------	---

RNAV (GPS) RWY 12

DENISON MUNI (DNS)

RNP APCH.

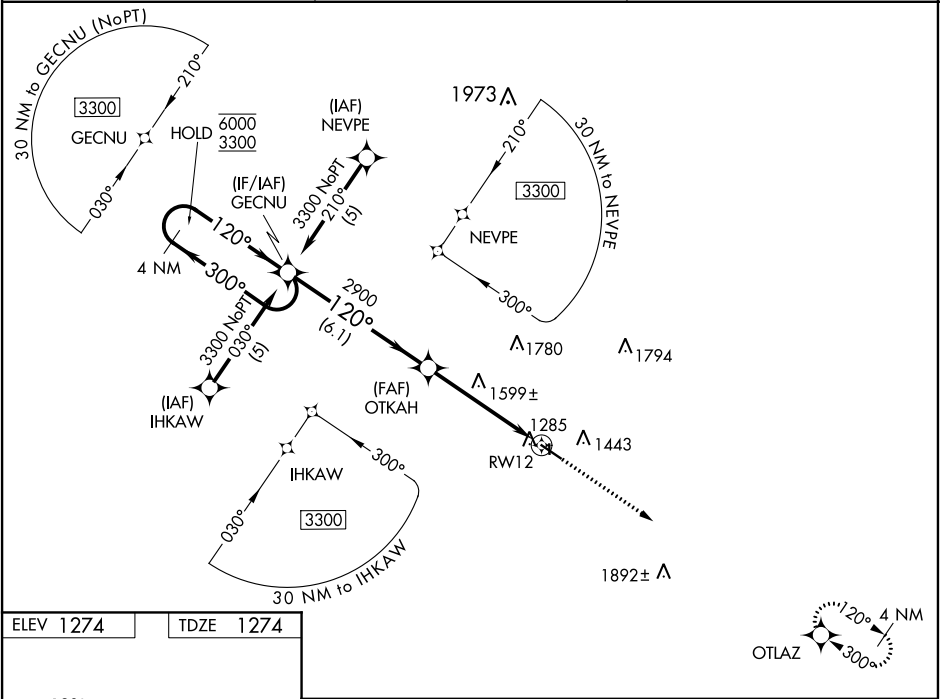
⚠

Circling NA to Rws 18 and 36. For uncompensated Baro-VNAV systems, LNAV/VNAV NA below -17°C or above 54°C. Baro-VNAV and VDP NA when using Carroll altimeter setting. When local altimeter setting not received, use Carroll altimeter setting; increase LPV DA 1596 feet, LNAV/VNAV DA to 1626 feet; increase all MDAs 80 feet and visibility LNAV Cat C ½ SM and Circling Cat C ¼ SM.

MISSED APPROACH:

Climb to 3900 direct OTLAZ and hold.

AWOS-3 119.95	MINNEAPOLIS CENTER 119.6 290.4	UNICOM 122.8 (CTAF) 0
-------------------------	--	---------------------------------



ELEV 1274

TDZE 1274

MIRL Rwy 12-30 0

REIL Rws 12 and 30 0

4 NM Holding Pattern				VGSI and RNAV glidepath not coincident (VGSI Angle 3.00/TCH 27).	3900	OTLAZ
GECNU				OTKAH	*LNAV only	
6000 ← 300°				2900	*1.8 NM to RW12	
3300 → 120°				2900	RW12	
GP 3.00° TCH 40				6.1 NM	3.1 NM	1.8
CATEGORY	A	B	C	D		
LPV DA	1524-1 250 (300-1)			NA		
LNAV/VNAV DA	1554-1 280 (300-1)			NA		
LNAV MDA	1860-1	586 (600-1)	1860-1 586 (600-1 3/4)	NA		
CIRCLING	1860-1 586 (600-1)	1880-1 606 (700-1)	1880-1 3/4 606 (700-1 3/4)	NA		