

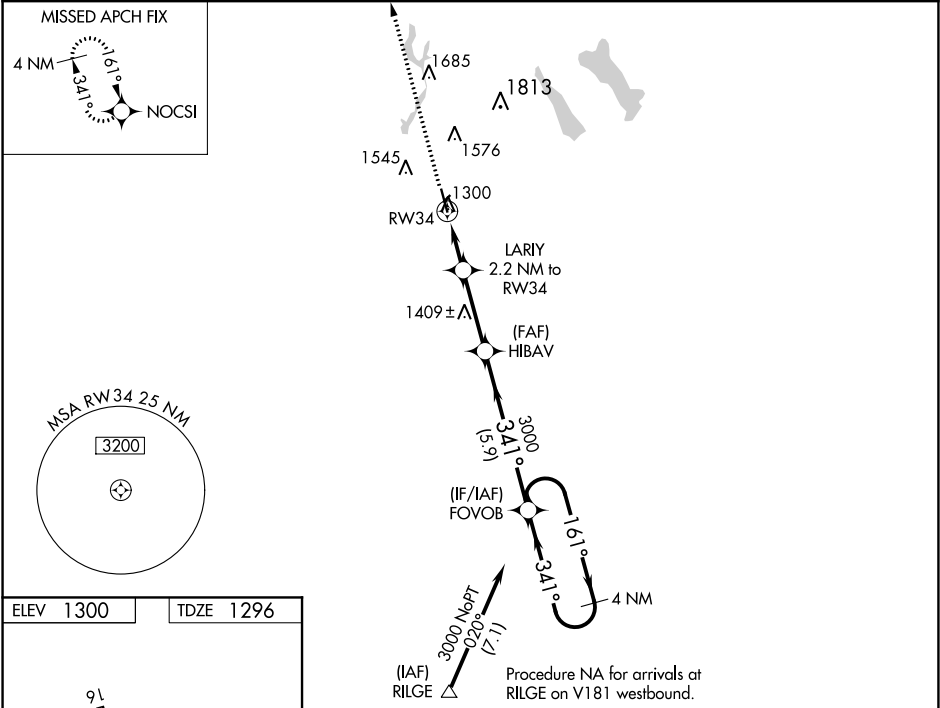
WAAS CH <b>82422</b> <b>W34A</b>	APP CRS <b>341°</b>	Rwy Idg <b>4901</b> TDZE <b>1296</b> Apt Elev <b>1300</b>
--	------------------------	---

RNAV (GPS) RWY 34  
CRESTON MUNI (CSQ)

**⚠** DME/DME RNP-0.3 NA. Helicopter visibility reduction below 1 SM NA. Circling NA for Cats B and C west of Rwy 16-34. Circling NA to Rwy 4-22. When local altimeter setting not received, use Des Moines altimeter setting and increase all MDA 160 feet, and increase LP and LNAV Cat C visibility ½ mile, Circling Cat C visibility ½ mile.

MISSED APPROACH: Climb to 3000 direct NOCSI and hold.

AWOS-3 <b>124.75</b>	MINNEAPOLIS CENTER <b>125.65 306.95</b>	UNICOM <b>122.8 (CTAF) ①</b>
-------------------------	--	---------------------------------



MIRL Rwy 16-34

REIL Rws 16 and 34

341° to RW34

3000
↑

NOCSI

HIBAV

FOVOB

4 NM Holding Pattern

LARIY
2.2 NM to RW34
≤ 3.00° TCH 46

RW34
2040

341°
3000

161°
341°
3000

2.2 NM

3 NM

5.9 NM

CATEGORY	A	B	C	D
LP MDA	1660-1 364 (400-1)			NA
LNAV MDA	1660-1 364 (400-1)			NA
CIRCLING	1720-1 420 (500-1)	1760-1 460 (500-1)	1820-1½ 520 (600-1½)	NA

NC-3, 31 DEC 2020 to 28 JAN 2021

NC-3, 31 DEC 2020 to 28 JAN 2021