

WAAS CH <b>90441</b> <b>W32A</b>	APP CRS <b>316°</b>	Rwy Idg TDZE <b>1245</b> Apt Elev <b>1245</b>
--	------------------------	---

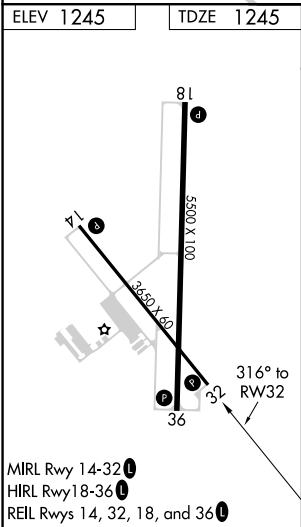
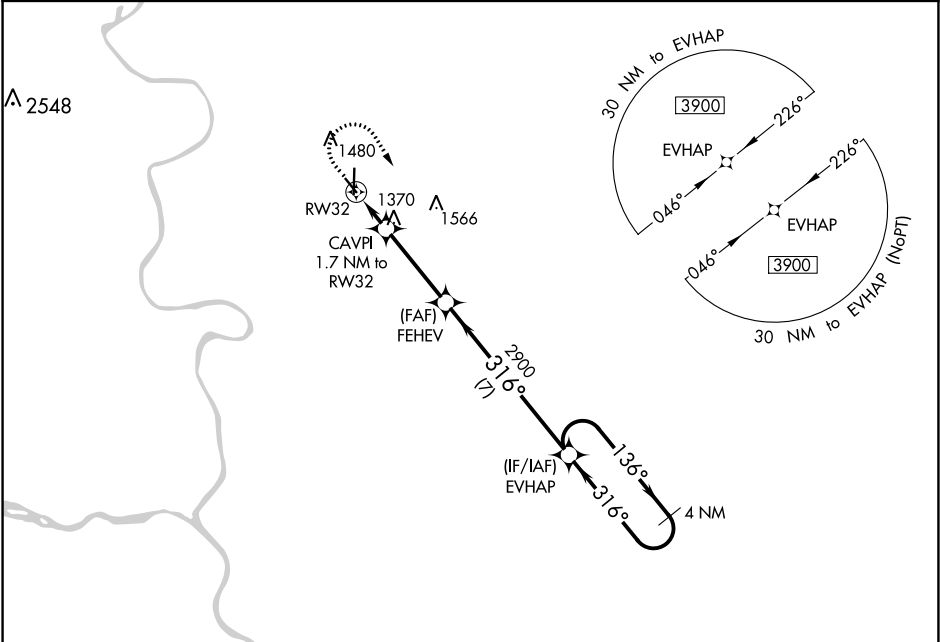
RNAV (GPS) RWY 32

COUNCIL BLUFFS MUNI (CBF)

For uncompensated Baro-VNAV systems, LNAV/VNAV NA below -18°C (0°F) or above 54°C (130°F).  
DME/DME RNP- 0.3 NA.

MISSED APPROACH: Climb to 2000 then climbing right turn to 3900 direct EVHAP and hold.

AWOS-3 <b>126.575</b>	OMAHA APP CON <b>124.5 263.0</b>	CLNC DEL <b>127.675</b>	UNICOM <b>122.8 (CTAF)</b>
--------------------------	-------------------------------------	----------------------------	-------------------------------



	2000	3900	EVHAP	VGSI and RNAV glidepath not coincident (VGSI Angle 3.50/TCH 30).	4 NM Holding Pattern
* LNAV only					
			CAVPI 1.7 NM to RW32		
			* 0.9 NM to RW32		
			RW32		
			FEHEV 2900		
			EVHAP		
			136°		
			316°		
			3900		
			GP 3.00°		
			TCH 40		
			0.9	0.8	3.4 NM
			7 NM		
CATEGORY	A	B	C	D	
LPV DA		1445-¾	200 (200-¾)		
LNAV/VNAV DA		1495-¾	250 (300-¾)		
LNAV MDA		1620-1	375 (400-1)		
CIRCLING	1780-1	535 (600-1)	1780-1½ 535 (600-1½)	1880-2 635 (700-2)	