

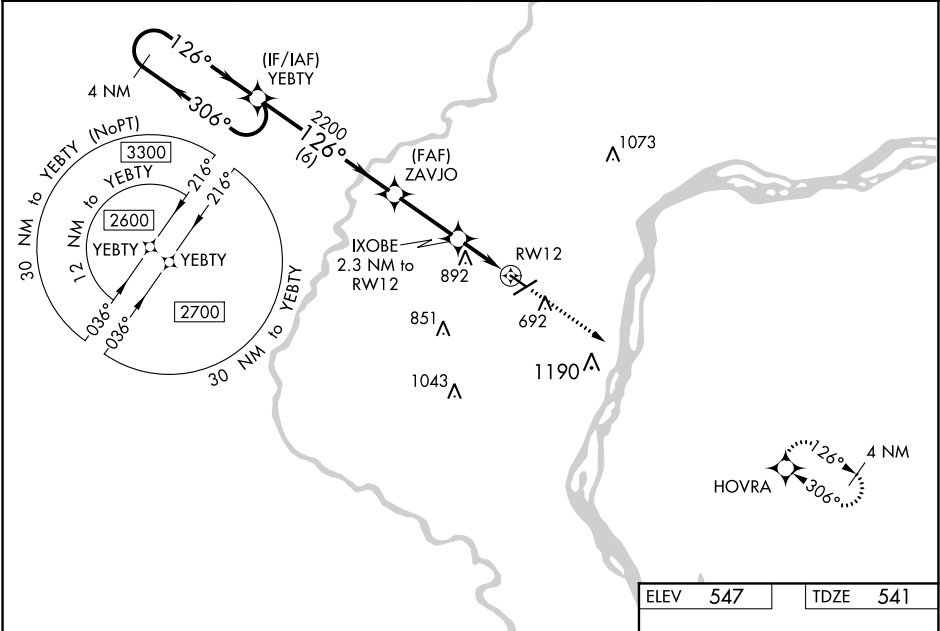
WAAS CH <b>56336</b> <b>W12A</b>	APP CRS <b>126°</b>	Rwy Idg <b>4000</b> TDZE <b>541</b> Apt Elev <b>547</b>
--	------------------------	---

**RNAV (GPS) RWY 12**  
MUSCATINE MUNI (MUT)

**⚠** DME/DME RNP-0.3 NA. Helicopter visibility reduction below 1 SM NA. VDP and Baro-VNAV NA with Iowa City altimeter setting. When local altimeter setting not received, use Iowa City altimeter setting and increase all DA 76 feet and all MDA 80 feet, increase LPV, LNAV/VNAV all Cals visibility ½ mile. For uncompensated Baro-VNAV systems, LNAV/VNAV NA below -16°C (4°F) or above 54°C (130°F).

MISSED APPROACH: Climb to 2700 direct HOVRA and hold.

AWOS-3 <b>119.775</b>	QUAD CITY APP CON ★ <b>133.275 257.8</b>	CINC DEL <b>119.125</b>	UNICOM <b>122.7 (CTAF) 0</b>
--------------------------	---	----------------------------	---------------------------------



4 NM Holding Pattern

YEBTY

ZAVJO

IXOBE 2.3 NM to RWY12

\*1.8 NM to RWY12

\*1300

GP 3.00° TCH 44

CATEGORY	A	B	C	D
LPV DA	1207-2½	666 (700-2½)		NA
LNAV/VNAV DA	1223-2½	682 (700-2½)		NA
LNAV MDA	1140-1	599 (600-1)		NA
CIRCLING	1140-1 593 (600-1)	1200-1 653 (700-1)		NA

ELEV 547

TDZE 541

HOVRA

126° to RWY12

4000 X 75

5500 X 100

633

REIL Rwy 6, 12, and 30 0

MIRL Rwy 6-24 and 12-30 0

NC-3, 31 DEC 2020 to 28 JAN 2021

NC-3, 31 DEC 2020 to 28 JAN 2021