

WAAS CH 97423 W06A	APP CRS 064°	Rwy Idg TDZE Apt Elev	5501 823 823
--	------------------------	-----------------------------	---

RNAV (GPS) RWY 6

MEXICO MEMORIAL (MYJ)

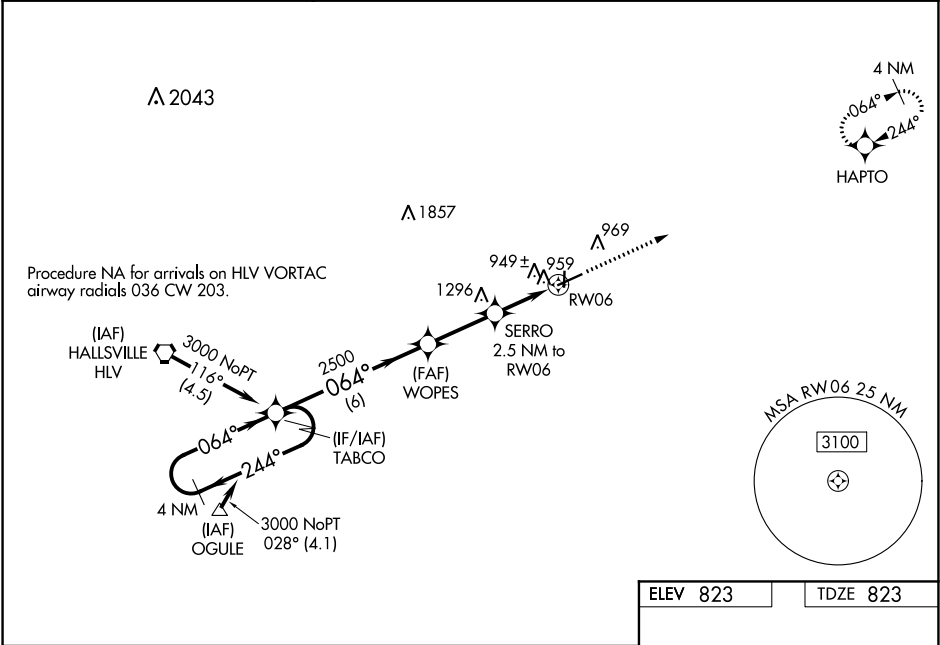
▼

▲ NA

For uncompensated Baro-VNAV systems, LNAV/VNAV NA below -16°C (4°F) or above 54°C (130°F). When local altimeter setting not received, use Columbia Rgnl altimeter setting and increase all DA 121 feet, all MDA 140 feet, increase LPV all Cats visibility to 1¼, LNAV/VNAV all Cats and LNAV Cat C visibility to 1¾. DME/DME RNP-0.3 NA. Helicopter visibility reduction below ¾ SM NA. VDP and Baro-VNAV NA when using Columbia Rgnl altimeter setting.

MISSED APPROACH: Climb to 3000 direct HAPTO and hold.

AWOS-3PT 120.575	MIZZU APP CON 124.375	CTAF 122.9 0
----------------------------	---------------------------------	------------------------



4 NM Holding Pattern

TABCO

3000

←244°

064°→

GP 3.00°
TCH 40

WOPES

2500

064°

SERRO
2.5 NM to
RW06

*1.1 NM to
RW06

RW06

*1640

3000 HAPTO

*LNAV only

8 L
3200 X 50
36

064° to
RW06

REIL Rwy 18 0
MIRL Rwy 6-24 0
URL Rwy 18-36 0

CATEGORY	A	B	C	D
LPV DA	1073-7/8	250 (300-7/8)		NA
LNAV/VNAV DA	1099-7/8	276 (300-7/8)		NA
LNAV MDA	1200-1	377 (400-1)		NA
CIRCLING	1280-1	457 (500-1)	1280-1½ 457 (500-1½)	NA