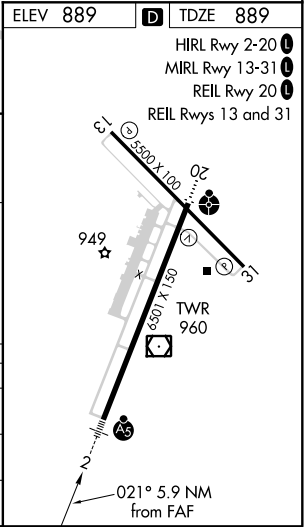
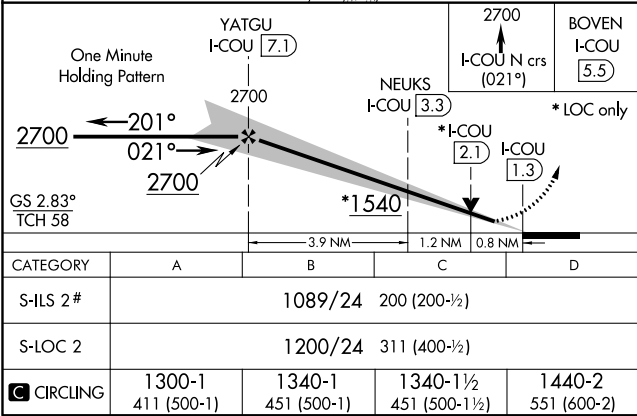
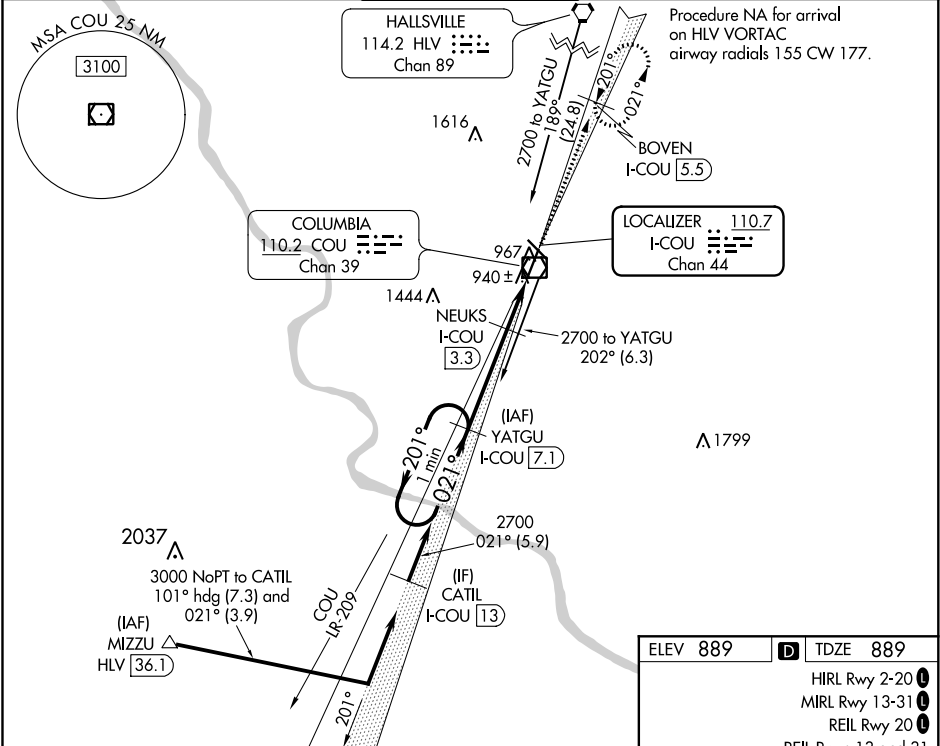


LOC/DME I-COU	APP CRS	Rwy Idg	6501
110.7	021°	TDZE	889
Chan 44		Apt Elev	889

ILS or LOC RWY 2  
COLUMBIA RGNL (COU)

<p><b>⚠</b> Circling NA for Cat D west of Rwy 2 and 13. DME required. # RVR 1800 authorized with use of FD or AP or HUD to DA.</p>	<p><b>MALSR</b> <b>A5</b></p>	<p><b>MISSED APPROACH:</b> Climb to 2700 on I-COU localizer north course (021°) to BOVEN/I-COU 5.5 DME and hold.</p>
--	-----------------------------------	--

ATIS <b>128.45</b>	MIZZU APP CON <b>124.375 353.7</b>	<b>COLUMBIA TOWER ★</b> <b>119.3 (CTAF) 363.25</b>	GND CON <b>121.6</b>	UNICOM <b>122.95</b>
-----------------------	---------------------------------------	---	-------------------------	-------------------------



NC-3, 31 DEC 2020 to 28 JAN 2021

NC-3, 31 DEC 2020 to 28 JAN 2021