

LOC/DME I-COU 110.7 Chan 44	APP CRS 201°	Rwy Idg TDZE Apt Elev 6501 889 889
---	------------------------	--

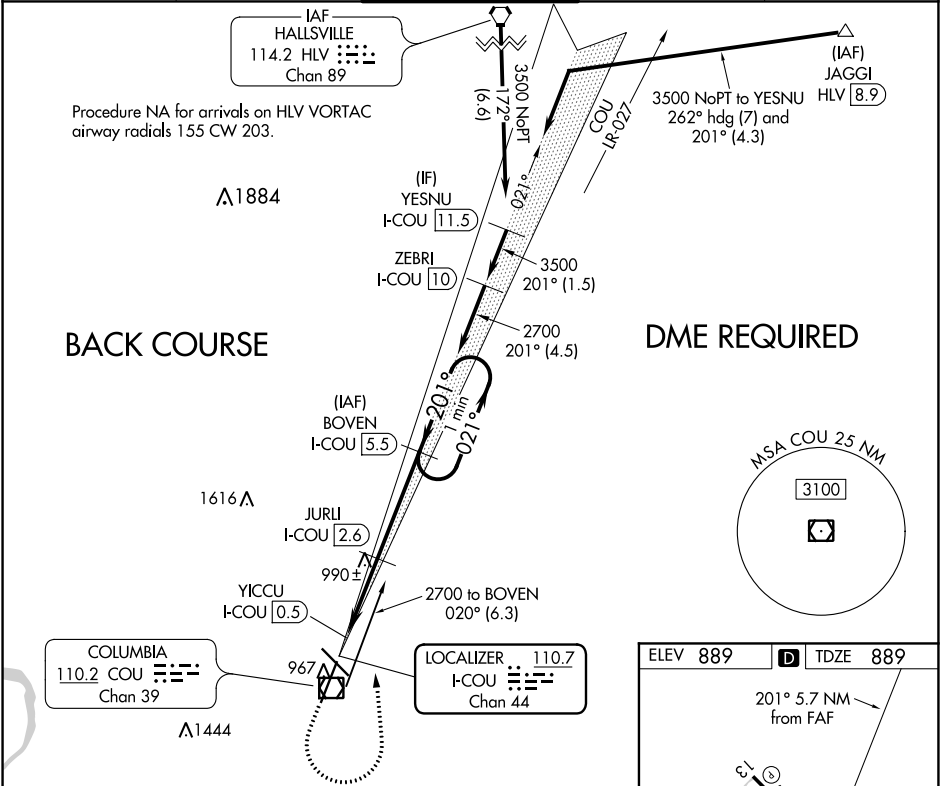
LOC BC RWY 20
COLUMBIA RGNL (COU)

⚠ Circling NA for Cat D west of Rwy 2 and 13.
DME required.

ODALS

MISSED APPROACH: Climb to 1700 then climbing left turn to 2700 on heading 355° and I-COU localizer north course (021°) to BOVEN/I-COU 5.5 DME and hold.

ATIS 128.45	MIZZU APP CON 124.375 353.7	COLUMBIA TOWER★ 119.3 (CTAF) 363.25	GND CON 121.6	UNICOM 122.95
-----------------------	---------------------------------------	---	-------------------------	-------------------------



1700
↑
2700
hdg 355°

I-COU DME ANTENNA
YICCU I-COU 0.5

JURJI I-COU 2.6

BOVEN I-COU 5.5

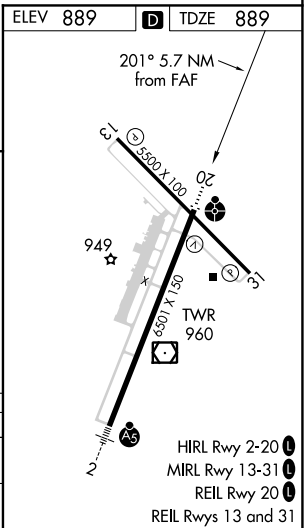
BOVEN I-COU 5.5

One Minute Holding Pattern

Disregard GS indications.

0.7 2.1 NM 2.9 NM

CATEGORY	A	B	C	D
S-LOC 20	1240-3/4 351 (400-3/4)		1240-7/8 351 (400-7/8)	
CIRCLING	1300-1 411 (500-1)	1340-1 451 (500-1)	1340-1 1/2 451 (500-1 1/2)	1440-2 551 (600-2)



NC-3, 31 DEC 2020 to 28 JAN 2021

NC-3, 31 DEC 2020 to 28 JAN 2021