

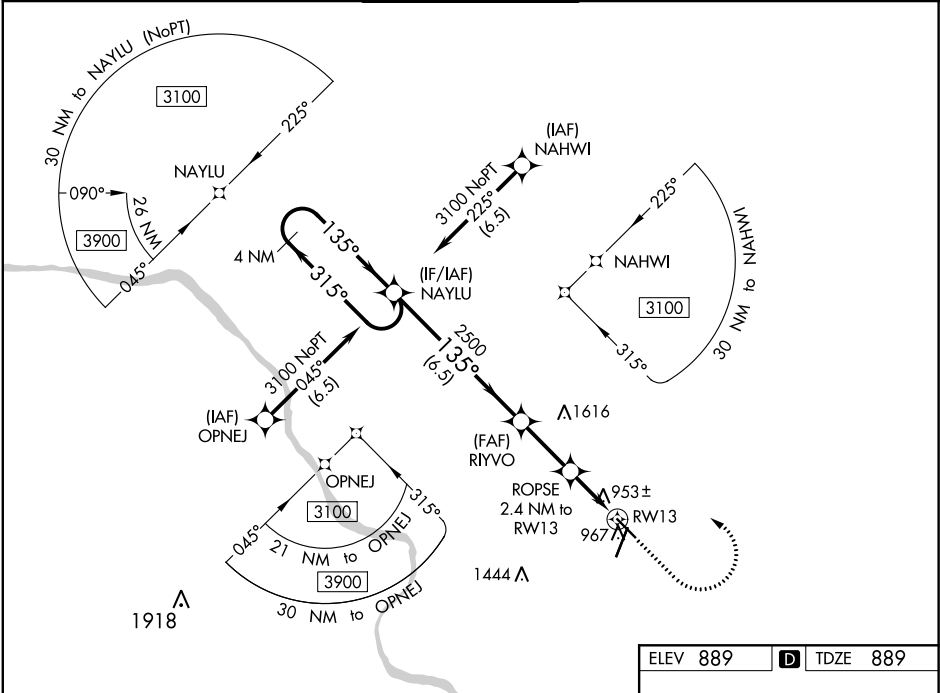
WAAS CH <b>40042</b> <b>W13A</b>	APP CRS <b>135°</b>	Rwy Idg TDZE <b>889</b> Apt Elev <b>889</b>
--	------------------------	---

RNAV (GPS) RWY 13

COLUMBIA RGNL (COU)

<div><div></div><div>For uncompensated Baro-VNAV systems, LNAV/VNAV NA below -17°C (2°F) or above 54°C (130°F). Circling NA for Cat D west of Rwy 2 and 13. DME/DME RNP-0.3 NA.</div></div>	MISSED APPROACH: Climb to 2000 then climbing left turn to 3100 direct NAYLU and hold.
---	---

ATIS <b>128.45</b>	MIZZU APP CON <b>124.375 353.7</b>	COLUMBIA TOWER ★ <b>119.3 (CTAF) 363.25</b>	GND CON <b>121.6</b>	UNICOM <b>122.95</b>
-----------------------	---------------------------------------	--	-------------------------	-------------------------



4 NM Holding Pattern		NAYLU		RIYVO		2000 3100 NAYLU	
3100		315°		135°		* LNAV only	
GP 3.00°		TCH 45		2500		ROPSE 2.4 NM to RW13	
				*1680		*0.9 NM to RW13	
				RW13			
		6.5 NM		2.5 NM		1.5 NM	
						0.9	
CATEGORY		A	B	C	D		
LPV DA			1139-1	250 (300-1)			
LNAV/VNAV DA			1139-1	250 (300-1)			
LNAV MDA			1220-1	331 (400-1)			
CIRCLING		1300-1 411 (500-1)	1340-1 451 (500-1)	1340-1½ 451 (500-1½)	1440-2 551 (600-2)		

