

WAAS CH 56522 W19A	APP CRS 190°	Rwy Idg TDZE Apt Elev	5001 1245 1255
--	------------------------	-----------------------------	---

RNAV (GPS) RWY 19

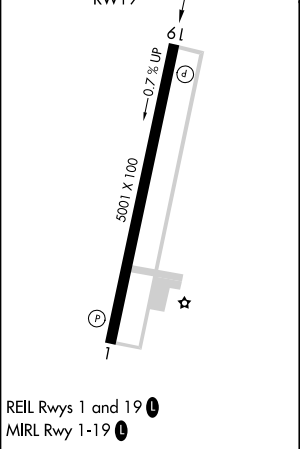
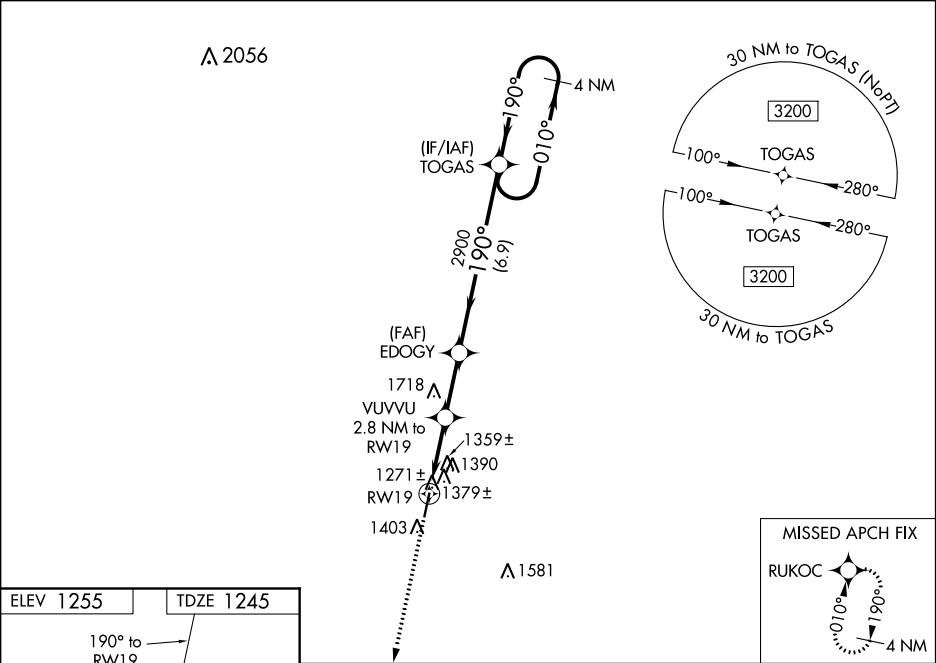
NEOSHO HUGH ROBINSON (E/O S)

⚠

When VGSI inop, Circling Rwy 1 NA at night. For uncompensated Baro-VNAV systems, LNAV/VNAV NA below -17°C (2°F) or above 54°C (130°F). DME/DME RNP-0.3 NA. Visibility reduction by helicopters NA. When local altimeter setting not received, use Joplin altimeter setting and increase all DA 87 feet and all MDA 100 feet; increase LPV all Cats visibility ½ mile, LNAV/VNAV all Cats visibility ¾ mile, and LNAV Cat C visibility ½ mile. VDP and Baro-VNAV NA when using Joplin altimeter setting.

MISSED APPROACH: Climb to 3300 direct RUKOC and hold.

KANSAS CITY CENTER 128.6 282.325	AUNICOM 122.8 (CTAF) 0
--	----------------------------------



3300	RUKOC	VUVVU	EDOGY	TOGAS	4 NM Holding Pattern
		2.8 NM to RW19	2900		
*LNAV only		*1.2 NM to RW19			
	RW19		2140*	2900	3200
	1.2 NM	1.6 NM	2.4 NM	6.9 NM	
CATEGORY	A	B	C	D	
LPV DA	1495-1	250 (300-1)		NA	
LNAV/VNAV DA	1692-1½	447 (500-1½)		NA	
LNAV MDA	1640-1	395 (400-1)	1640-1¼ 395 (400-1¼)	NA	
CIRCLING	1720-1	465 (500-1)	1740-1½ 485 (500-1½)	NA	