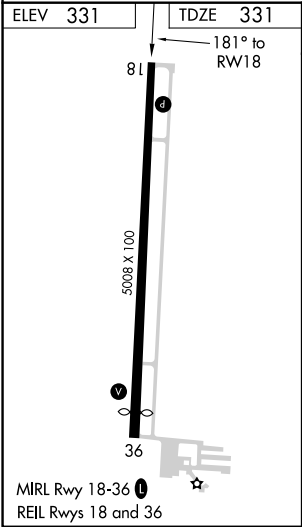
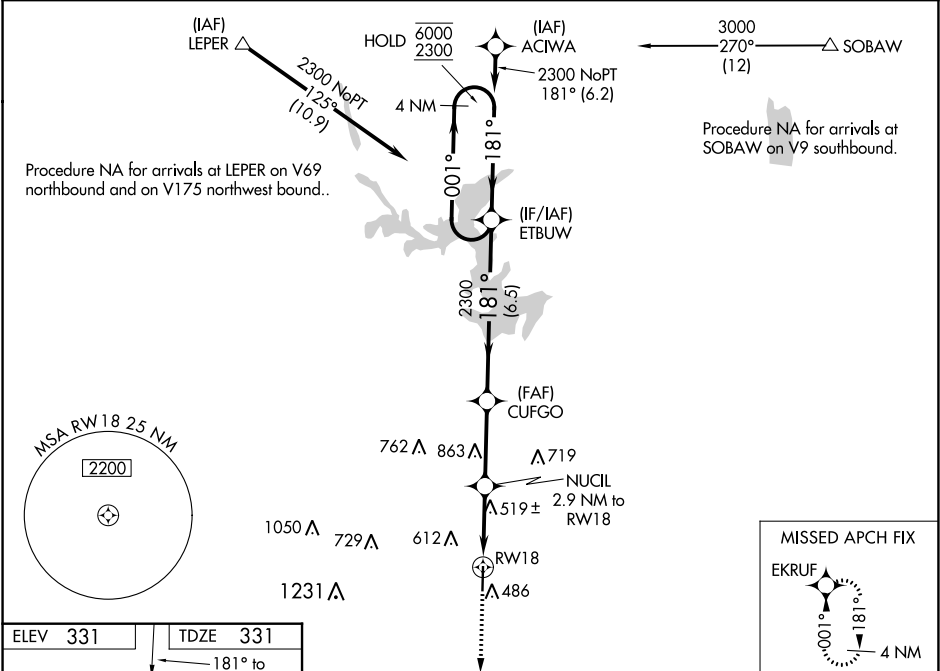




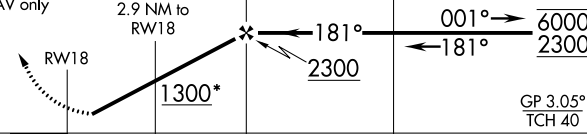
WAAS CH 97499 W18A	APP CRS 181°	Rwy Idg 5008 TDZE 331 Apt Elev 331
--	------------------------	---

RNAV (GPS) RWY 18
POPLAR BLUFF RGNL BUSINESS (POB)

RNP APCH.	MISSED APPROACH: Climb to 2300 direct EKRUF and hold.
-----------	---

ASOS 124.225	MEMPHIS CENTER 120.075 289.4	UNICOM 123.0 (CTAF) 0
------------------------	--	---------------------------------



2300	EKRUF	VGSI and RNAV glidepath not coincident (VGSI Angle 3.00/TCH 30).		
				
*LNAV only	NUCIL 2.9 NM to RW18	CUFGO	ETBUW	4 NM Holding Pattern
				
CATEGORY	A	B	C	D
LPV DA	634-1 303 (400-1)			
LNAV/ VNAV DA	675-1¼ 344 (400-1¼)			
LNAV MDA	800-1 469 (500-1)		800-1⅜ 469 (500-1⅝)	800-1½ 469 (500-1½)
CIRCLING	840-1 509 (600-1)	920-1 589 (600-1)	920-1½ 589 (600-1½)	980-2 649 (700-2)

NC-3, 31 DEC 2020 to 28 JAN 2021

NC-3, 31 DEC 2020 to 28 JAN 2021