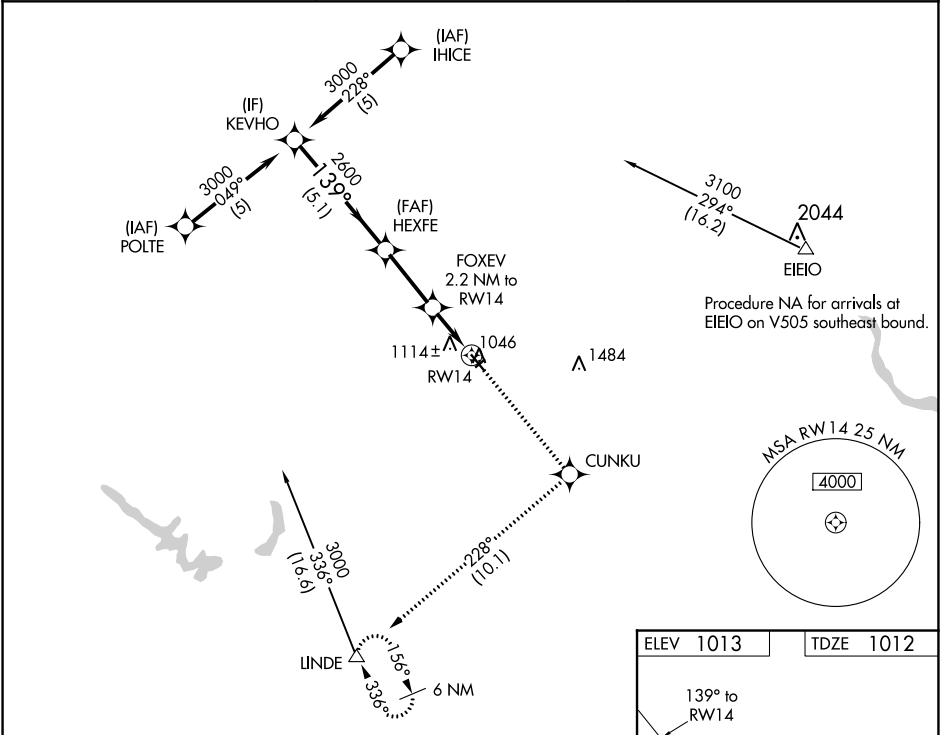


WAAS CH 61326 W14A	APP CRS 139°	Rwy Idg TDZE Apt Elev	4001 1012 1013
----------------------------------------	------------------------	-----------------------------	-------------------------------------------

RNAV (GPS) RWY 14
PERRY MUNI (PRO)

RNP APCH.	MISSED APPROACH: Climb to 3500 direct CUNKU and on track 228° to LINDE and hold.
Circling NA to Rwy 4 and 22. Rwy 14 helicopter visibility reduction below 3/4 SM NA. For uncompensated Baro-VNAV systems, LNAV/VNAV NA below -17°C or above 54°C.	

AWOS-3 118.0	DES MOINES APP CON 135.2 360.7	UNICOM 122.8 (CTAF) 0
------------------------	------------------------------------------	---------------------------------



VGSI and RNAV glidepath not coincident (VGSI Angle 3.00/TCH 27).			
CATEGORY	A	B	C
LPV DA	1262-7/8	250 (300-7/8)	NA
LNAV/VNAV DA	1262-7/8	250 (300-7/8)	NA
LNAV MDA	1380-1	368 (400-1)	NA
CIRCLING	1460-1 447 (500-1)	1480-1 467 (500-1)	NA

