

WAAS
CH **78021**
W11A

APP CRS
114°

Rwy Idg **4001**
TDZE **1155**
Apt Elev **1158**

RNAV (GPS) RWY 11
DECORAH MUNI (DEH)

RNP APCH.

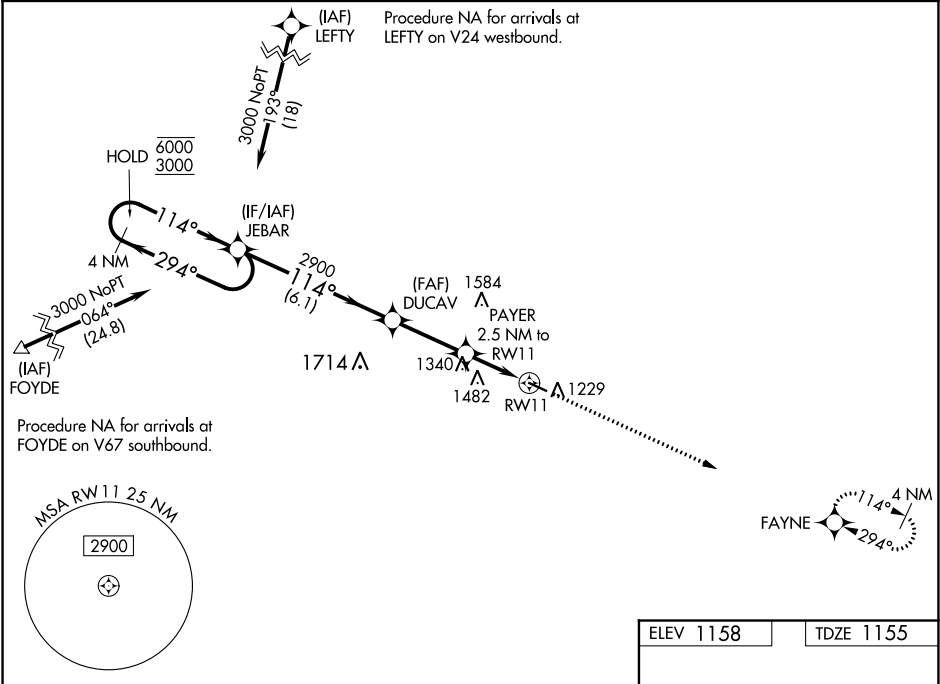
▼

▲

For uncompensated Baro-VNAV systems, LNAV/VNAV NA below -17°C or above 54°C.

MISSED APPROACH: Climb to 3200 direct FAYNE and hold.

AWOS-3 120.925	MINNEAPOLIS CENTER 118.85	UNICOM 122.8 (CTAF) 0
--------------------------	-------------------------------------	--



4 NM Holding Pattern

JEBAR

DUCAV

PAYER 2.5 NM to RW11

*1980

3200 FAYNE

*LNAV only.

1.3 NM to RW11

1.2 NM

1.3 NM

0.3% UP

4001 X.75

120

GP 3.00°	TCH 40	6.1 NM	2.9 NM	1.2 NM	1.3 NM
CATEGORY	A	B	C	D	
LPV DA	1405-1	250 (300-1)	NA		
LNAV/VNAV DA	1405-1	250 (300-1)	NA		
LNAV MDA	1600-1	445 (500-1)	NA		
CIRCLING	1600-1 442 (500-1)	1620-1 462 (500-1)	NA		

ELEV 1158

TDZE 1155

REIL Rwy 11 and 29 **0**
MIRL Rwy 11-29 **0**